

## PEN2 polyclonal antibody

Catalog: BS91050

Host: Rabbit

Reactivity: Human, Mouse, Rat

### BackGround:

Four proteins comprise the gamma-secretase complex: presenilin, nicastrin, aph-1, and PEN-2. Together, these proteins mediate cell surface signaling pathways for a variety of type I membrane proteins, notably amyloid-beta precursor protein, a protein implicated in the development of Alzheimer's disease, via intramembrane proteolysis. The proteins assemble into a proteolytically active complex in the golgi/trans-golgi network (TGN) compartments. Assembly leads to autocleavage of presenilin into two subunits to create the active site of gamma-secretase, an important step in understanding the mechanisms involved in the etiology and possible treatment of Alzheimer's disease.

### Product:

Rabbit IgG, 1mg/ml in PBS with 0.02% sodium azide, 50% glycerol, pH7.2

### Molecular Weight:

12 kDa

### Swiss-Prot:

Q9NZ42(Human) Q9CQR7(Mouse) O88777(Rat)

### Purification&Purity:

ProA affinity purified

### Applications:

WB:1:500-1:2,000

IHC:1:50-1:200

ICC:1:50-1:200

FC:1:50-1:100

### Storage&Stability:

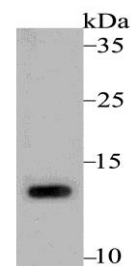
Store at +4 °C after thawing. Aliquot store at -20 °C. Avoid

repeated freeze / thaw cycles.

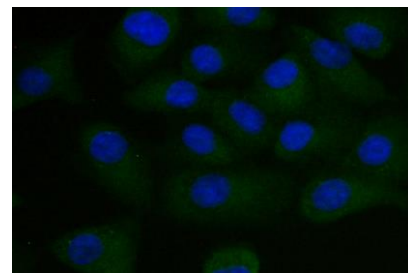
### Specificity:

PEN2 polyclonal antibody detects endogenous levels of PEN2 protein.

### DATA:



Western blot analysis of PEN2 on mouse spleen tissue lysate using anti-PEN2 antibody at 1/2,000 dilution.



ICC staining PEN2 in A549 cells (green). The nuclear counter stain is DAPI (blue). Cells were fixed in paraformaldehyde, permeabilised with 0.25% Triton X100/PBS.

### Note:

For research use only, not for use in diagnostic procedure.

### Bioworld Technology, Inc.

Add: 1660 South Highway 100, Suite 500 St. Louis Park, MN 55416, USA.

Email: [info@bioworld.com](mailto:info@bioworld.com)

Tel: 6123263284

Fax: 6122933841

### Bioworld technology, co. Ltd.

Add: No 9, weidi road Qixia District Nanjing, 210046, P. R. China.

Email: [info@biogot.com](mailto:info@biogot.com)

Tel: 0086-025-68037686

Fax: 0086-025-68035151