

## PGC1 $\beta$ polyclonal antibody

Catalog: BS91063

Host: Rabbit

Reactivity: Human, Rat

### Background:

Plays a role of stimulator of transcription factors and nuclear receptors activities. Activates transcriptional activity of estrogen receptor alpha, nuclear respiratory factor 1 (NRF1) and glucocorticoid receptor in the presence of glucocorticoids. May play a role in constitutive non-adrenergic-mediated mitochondrial biogenesis as suggested by increased basal oxygen consumption and mitochondrial number when overexpressed. May be involved in fat oxidation and non-oxidative glucose metabolism and in the regulation of energy expenditure. Induces the expression of PERM1 in the skeletal muscle in an ESRRA-dependent manner.

### Product:

Rabbit IgG, 1mg/ml in PBS with 0.02% sodium azide, 50% glycerol, pH7.2

### Molecular Weight:

### Swiss-Prot:

Q86YN6(Human) Q8VHJ7(Mouse) Q811R2(Rat)

### Purification&Purity:

ProA affinity purified

### Applications:

WB:1:500-1:2,000

FC:1:50-1:200

IP:1:10-1:50

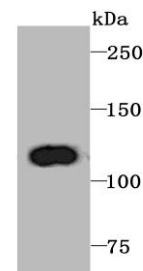
### Storage&Stability:

Store at +4 °C after thawing. Aliquot store at -20 °C or -80 °C. Avoid repeated freeze / thaw cycles.

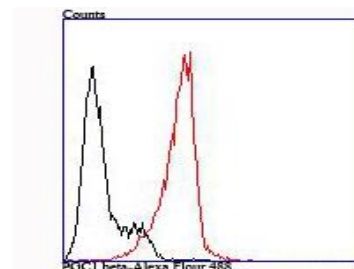
### Specificity:

PGC1 $\beta$  polyclonal antibody detects endogenous levels of PGC1 $\beta$  protein.

### DATA:



Western blot analysis of PGC1 beta on rat spleen tissue lysate using anti-PGC1 beta antibody at 1/1,000 dilution.



Flow cytometric analysis of HL-60 cells with PGC1 beta antibody at 1/100 dilution (red) compared with an unlabelled control (cells without incubation with primary antibody; black).

### Note:

For research use only, not for use in diagnostic procedure.

### Bioworld Technology, Inc.

Add: 1660 South Highway 100, Suite 500 St. Louis Park, MN 55416, USA.

Email: [info@bioworld.com](mailto:info@bioworld.com)

Tel: 6123263284

Fax: 6122933841

### Bioworld technology, co. Ltd.

Add: No 9, weidi road Qixia District Nanjing, 210046, P. R. China.

Email: [info@biogot.com](mailto:info@biogot.com)

Tel: 0086-025-68037686

Fax: 0086-025-68035151