

## PKC $\mu$ polyclonal antibody

Catalog: BS91086

Host: Rabbit

Reactivity: Human, Mouse, Rat

### BackGround:

Converts transient diacylglycerol (DAG) signals into prolonged physiological effects, downstream of PKC. In epithelial cells, is required for transducing flagellin-stimulated inflammatory responses by binding and phosphorylating TLR5, which contributes to MAPK14/p38 activation and production of inflammatory cytokines. May play a role in inflammatory response by mediating activation of NF-kappa-B. May be involved in pain transmission by directly modulating TRPV1 receptor. Plays a role in activated KRAS-mediated stabilization of ZNF304 in colorectal cancer (CRC) cells. Regulates nuclear translocation of transcription factor TFEB in macrophages upon live *S. enterica* infection.

### Product:

Rabbit IgG, 1mg/ml in PBS with 0.02% sodium azide, 50% glycerol, pH7.2

### Molecular Weight:

102 kDa

### Swiss-Prot:

Q15139(Human) Q62101(Mouse) Q9WTQ1(Rat)

### Purification&Purity:

ProA affinity purified

### Applications:

WB:1:500-1:2,000

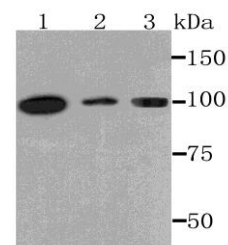
### Storage&Stability:

Store at +4 °C after thawing. Aliquot store at -20 °C or -80 °C. Avoid repeated freeze / thaw cycles.

### Specificity:

PKC $\mu$  polyclonal antibody detects endogenous levels of PKC $\mu$  protein.

### DATA:



Western blot analysis of PKC mu on different cell lysate using anti-PKC mu antibody at 1/1,000 dilution. Positive control: Lane1: Hela Lane2: Mouse kidney Lane3: PC12

### Note:

For research use only, not for use in diagnostic procedure.

### Bioworld Technology, Inc.

Add: 1660 South Highway 100, Suite 500 St. Louis Park, MN 55416, USA.

Email: [info@bioworld.com](mailto:info@bioworld.com)

Tel: 6123263284

Fax: 6122933841

### Bioworld technology, co. Ltd.

Add: No 9, weidi road Qixia District Nanjing, 210046, P. R. China.

Email: [info@biogot.com](mailto:info@biogot.com)

Tel: 0086-025-68037686

Fax: 0086-025-68035151