

PMP22 polyclonal antibody

Catalog: BS91094

Host: Rabbit

Reactivity: Human, Rat

BackGround:

PLP (myelin proteolipid protein or lipophilin) is a major constituent of myelin. The two isoforms of the myelin proteolipid protein, PLP and DM20, are very hydrophobic integral membrane proteins that account for about half of the protein content of adult CNS myelin. A mutation in the gene which encodes PLP is linked to Pelizaeus-Merzbacher disease (PMD), a chronic infantile type of diffuse cerebral sclerosis. The gene which encodes PLP maps to human chromosome Xq13-q22. The glycoprotein zero (also designated P-zero or myelin peripheral protein) is the major structural protein of peripheral myelin, accounting for more than 50% of the protein present in the sheath of peri-pheral nerves. Zero is an integral membrane glycoprotein whose expression is restricted to Schwann cells. The gene which encodes zero maps to human chromosome 1q22. PMP22 (peripheral myelin protein 22) is a growth-regulated membrane protein which is expressed by Schwann cells and is localized mainly in compact peripheral nervous system myelin. The gene which encodes PMP22 maps to human chromosome 17p11.2.

Product:

Rabbit IgG, 1mg/ml in PBS with 0.02% sodium azide, 50% glycerol, pH7.2

Molecular Weight:

22 kDa

Swiss-Prot:

Q01453(Human) P25094(Rat)

Purification&Purity:

ProA affinity purified

Applications:

WB:1:500

ICC:1:50-1:200

IHC:1:50-1:200

FC:1:50-1:100

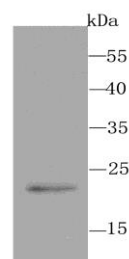
Storage&Stability:

Store at +4 °C after thawing. Aliquot store at -20 °C or -80 °C. Avoid repeated freeze / thaw cycles.

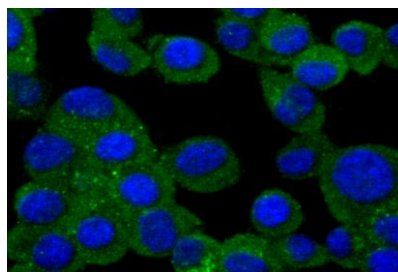
Specificity:

PMP22 polyclonal antibody detects endogenous levels of PMP22 protein.

DATA:



Western blot analysis of PMP22 on PC-12 cell using anti-PMP22 antibody at 1/500 dilution.



ICC staining PMP22 in N2A cells (green). The nuclear counter stain is DAPI (blue). Cells were fixed in paraformaldehyde, permeabilised with 0.25% Triton X100/PBS.

Note:

For research use only, not for use in diagnostic procedure.

Bioworld Technology, Inc.

Add: 1660 South Highway 100, Suite 500 St. Louis Park, MN 55416, USA.

Email: info@bioworld.com

Tel: 6123263284

Fax: 6122933841

Bioworld technology, co. Ltd.

Add: No 9, weidi road Qixia District Nanjing, 210046, P. R. China.

Email: info@biogot.com

Tel: 0086-025-68037686

Fax: 0086-025-68035151