

## PP2A $\alpha$ / $\beta$ polyclonal antibody

Catalog: BS91098

Host: Rabbit

Reactivity: Human, Mouse, Rat, zebrafish

### BackGround:

The catalytic subunit of protein phosphatase 2A (PP2A) is inactivated by in vitro phosphorylation of Tyr-307 by receptor and nonreceptor protein tyrosine kinases. The catalytic subunit of PP2A is phosphorylated by tyrosine-specific protein kinases and associates with a variety of regulatory subunits. Phosphorylation is enhanced in the presence of the phosphatase inhibitor okadaic acid, consistent with an autodephosphorylation reaction. Phosphorylation is catalyzed by p60v-src, p56lck, epidermal growth factor receptors, and insulin receptors. Transient deactivation of PP2A might enhance transmission of cellular signals through kinase cascades within cells. In eukaryotes, the phosphorylation and dephosphorylation of proteins on serine and threonine residues is an essential means of regulating a broad range of cellular functions, including cell division, homeostasis and apoptosis. A group of proteins that are intimately involved in this process are the protein phosphatases.

### Product:

Rabbit IgG, 1mg/ml in PBS with 0.02% sodium azide, 50% glycerol, pH7.2

### Molecular Weight:

36 kDa

### Swiss-Prot:

P62714(Human) P67775(Human) P62715(Mouse)  
P63330(Mouse) P62716(Rat) P63331(Rat)

### Purification&Purity:

ProA affinity purified

### Applications:

WB:1:1,000-1:2,000

ICC:1:50-1:200

IHC:1:100-1:200

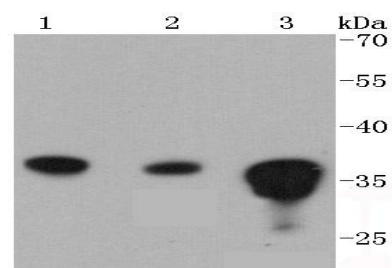
### Storage&Stability:

Store at +4 °C after thawing. Aliquot store at -20 °C or -80 °C. Avoid repeated freeze / thaw cycles.

### Specificity:

PP2A $\alpha$ / $\beta$  polyclonal antibody detects endogenous levels of PP2A $\alpha$ / $\beta$  protein.

### DATA:

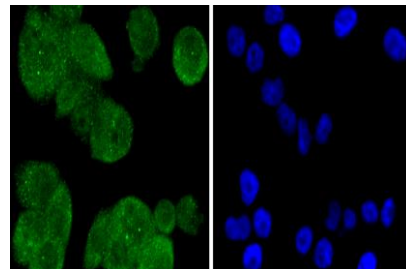


Western blot analysis of PP2A alpha + beta on different lysates using anti-PP2A alpha + beta antibody at 1/1,000 dilution. Positive control:

Lane 1: A431

Lane 2: NIH/3T3

Lane 3: 293T



ICC staining PP2A alpha + beta in PANC-1 cells (green). The nuclear counter stain is DAPI (blue). Cells were fixed in paraformaldehyde, permeabilised with 0.25% Triton X100/PBS.

### Note:

For research use only, not for use in diagnostic procedure.

### Bioworld Technology, Inc.

Add: 1660 South Highway 100, Suite 500 St. Louis Park, MN 55416, USA.

Email: [info@bioworld.com](mailto:info@bioworld.com)

Tel: 6123263284

Fax: 6122933841

### Bioworld technology, co. Ltd.

Add: No 9, weidi road Qixia District Nanjing, 210046, P. R. China.

Email: [info@biogot.com](mailto:info@biogot.com)

Tel: 0086-025-68037686

Fax: 0086-025-68035151