

## PP2C $\alpha$ polyclonal antibody

Catalog: BS91099

Host: Rabbit

Reactivity: Human, Mouse, Rat

### BackGround:

The phosphorylation and dephosphorylation of proteins on serine and threonine residues is an essential means of regulating a broad range of cellular functions in eukaryotes, including division, homeostasis and apoptosis. A group of proteins that are intimately involved in this process are the serine/ threonine protein phosphatases. Protein phosphatase 2Ca (PP2Ca) has broad specificity. It dephosphorylates and negatively regulates the activities of MAP kinases and MAP kinase-kinases while also inhibiting the activation of p38 and JNK kinase cascades, induced by environmental stresses. PP2Ca also induces the expression of endogenous p53 and the p53-responsive gene p21, leading to cell cycle arrest and apoptosis. The PP2Ca protein, which contains an active site containing a dinuclear metal ion center, shows highest expression in epithelial cells, as well as in the digestive tract, lung, kidney, breast, prostate, endocrine glands and brain.

### Product:

Rabbit IgG, 1mg/ml in PBS with 0.02% sodium azide, 50% glycerol, pH7.2

### Molecular Weight:

42/35 kDa, additional band 55 kDa.

### Swiss-Prot:

P35813(Human) P49443(Mouse) P20650(Rat)

### Purification&Purity:

ProA affinity purified

### Applications:

WB:1:500

ICC:1:100-1:500

IHC:1:50-1:200

FC:1:50-1:100

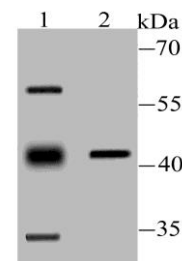
### Storage&Stability:

Store at +4 °C after thawing. Aliquot store at -20 °C or -80 °C. Avoid repeated freeze / thaw cycles.

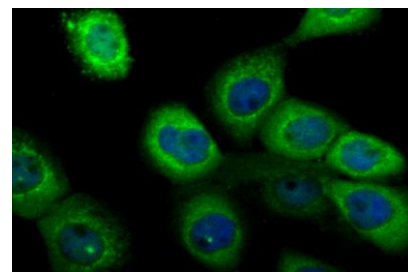
### Specificity:

PP2C $\alpha$  polyclonal antibody detects endogenous levels of PP2C $\alpha$  protein.

### DATA:



Western blot analysis of PP2C alpha on mouse kidney tissue (1) and rat skin tissue (2) lysate using anti-PP2C alpha antibody at 1/100 dilution.



ICC staining PP2C alpha in A431 cells (green). The nuclear counter stain is DAPI (blue). Cells were fixed in paraformaldehyde, permeabilised with 0.25% Triton X100/PBS.

### Note:

For research use only, not for use in diagnostic procedure.

### Bioworld Technology, Inc.

Add: 1660 South Highway 100, Suite 500 St. Louis Park, MN 55416, USA.

Email: [info@bioworld.com](mailto:info@bioworld.com)

Tel: 6123263284

Fax: 6122933841

### Bioworld technology, co. Ltd.

Add: No 9, weidi road Qixia District Nanjing, 210046, P. R. China.

Email: [info@biogot.com](mailto:info@biogot.com)

Tel: 0086-025-68037686

Fax: 0086-025-68035151