

## Profilin 1 polyclonal antibody

Catalog: BS91111

Host: Rabbit

Reactivity: Human, Mouse, Rat

### BackGround:

Profilins regulate Actin polymerization by binding to and sequestering the Actin monomer. Profilins act as a nucleotide exchange factor that charges Actin with ATP after binding the Actin monomer through a 1:1 stoichiometric relationship. Human Profilin-1 and Profilin-2 are encoded by two separate genes mapping to chromosomes 17p13.2 and 3q25.1, respectively. Both Profilin-1 and Profilin-2 are abundantly expressed in kidney. Profilin-1 is highly expressed in lung, liver, placenta and kidney while Profilin-2 is highly expressed in brain and skeletal muscle. In axonal and dendritic processes of mouse brain, Profilins co-localize with dynamin I and synapsin. Profilin may play a role in mediating cell adhesion. The overexpression of Profilin in endothelial cells results in increased adhesion to Fibronectin. In food allergy, plant Profilin is considered a pan-allergen. Case studies indicate individuals with allergies to various foods including celery, carrots, zucchini and peanuts are actually sensitive to the Profilin proteins in these foods.

### Product:

Rabbit IgG, 1mg/ml in PBS with 0.02% sodium azide, 50% glycerol, pH7.2

### Molecular Weight:

15 kDa

### Swiss-Prot:

P07737(Human) P62962(Mouse) P62963(Rat)

### Purification&Purity:

ProA affinity purified

### Applications:

WB:1:500-1:2,000

ICC:1:50-1:200

IHC:1:50-1:200

FC:1:50-1:100

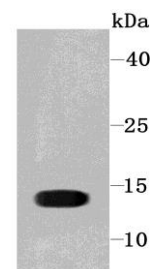
### Storage&Stability:

Store at +4 °C after thawing. Aliquot store at -20 °C or -80 °C. Avoid repeated freeze / thaw cycles.

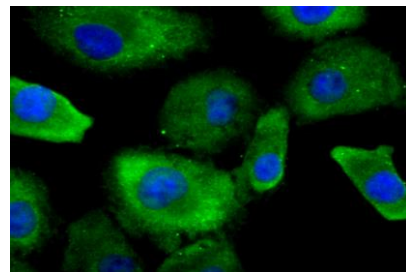
### Specificity:

Profilin 1 polyclonal antibody detects endogenous levels of Profilin 1 protein.

### DATA:



Western blot analysis of Profilin 1 on HeLa cell using anti-Profilin 1 antibody at 1/1,000 dilution.



ICC staining Profilin 1 in A549 cells (green). The nuclear counter stain is DAPI (blue). Cells were fixed in paraformaldehyde, permeabilised with 0.25% Triton X100/PBS.

### Note:

For research use only, not for use in diagnostic procedure.

### Bioworld Technology, Inc.

Add: 1660 South Highway 100, Suite 500 St. Louis Park, MN 55416, USA.

Email: [info@bioworld.com](mailto:info@bioworld.com)

Tel: 6123263284

Fax: 6122933841

### Bioworld technology, co. Ltd.

Add: No 9, weidi road Qixia District Nanjing, 210046, P. R. China.

Email: [info@biogot.com](mailto:info@biogot.com)

Tel: 0086-025-68037686

Fax: 0086-025-68035151