

## RACK1 polyclonal antibody

Catalog: BS91143

Host: Rabbit

Reactivity: Human, Mouse, Rat

### BackGround:

Members of the protein kinase C (PKC) family play a key regulatory role in a variety of cellular functions, including cell growth and differentiation, gene expression, hormone secretion and membrane function. Receptor for activated C kinases, termed RACKs, are intracellular receptors for activated PKC that may be involved in the activation-induced translocation of PKC. RACK1 (receptor for activated C kinase 1) is a 317 amino acid G protein  $\beta$  subunit-like protein that functions as a RACK and inhibits the activity of Src tyrosine kinases. In response to PKC activation, the intracellular localization of RACK1 and PKC  $\beta$ II changes, and RACK1 and PKC  $\beta$ II co-localize to the same sites. RACK1 is therefore thought to be a shuttling protein for PKC  $\beta$ II. A deficit in RACK1 may be associated with impaired PKC activation in the aging brain. The RACK1 gene is conserved in chimpanzee, dog, cow, mouse, rat, chicken, zebrafish, fruit fly, mosquito, *C.elegans*, *S.pombe*, *S.cerevisiae*, *K.lactis*, *E.gossypii*, *M.grisea*, *N.crassa*, *A.thaliana*, rice and *P.falciparum*, and maps to human chromosome 5q35.3.

### Product:

Rabbit IgG, 1mg/ml in PBS with 0.02% sodium azide, 50% glycerol, pH7.2

### Molecular Weight:

35 kDa

### Swiss-Prot:

P63244(Human) P63245(Rat)

### Purification&Purity:

ProA affinity purified

### Applications:

WB:1:1,000-1:2,000

IHC:1:50-1:200

FC:1:50-1:100

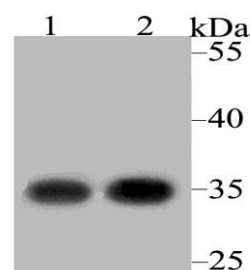
### Storage&Stability:

Store at +4 °C after thawing. Aliquot store at -20 °C. Avoid repeated freeze / thaw cycles.

### Specificity:

RACK1 polyclonal antibody detects endogenous levels of RACK1 protein.

### DATA:

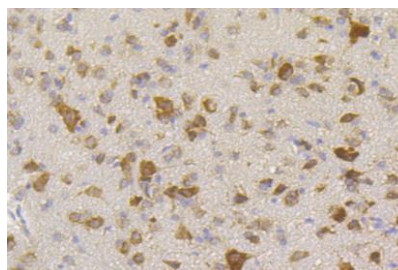


Western blot analysis of RACK1 on different lysates using anti-RACK1 antibody at 1/2,000 dilution.

Positive control:

Lane 1: SH-SY-5Y

Lane 2: Rat small intestine



Immunohistochemical analysis of paraffin-embedded rat cerebellum tissue using anti-RACK1 antibody. Counter stained with hematoxylin.

### Note:

For research use only, not for use in diagnostic procedure.

### Bioworld Technology, Inc.

Add: 1660 South Highway 100, Suite 500 St. Louis Park, MN 55416, USA.

Email: [info@bioworld.com](mailto:info@bioworld.com)

Tel: 6123263284

Fax: 6122933841

### Bioworld technology, co. Ltd.

Add: No 9, weidi road Qixia District Nanjing, 210046, P. R. China.

Email: [info@biogot.com](mailto:info@biogot.com)

Tel: 0086-025-68037686

Fax: 0086-025-68035151