

## RALBP1 polyclonal antibody

Catalog: BS91151

Host: Rabbit

Reactivity: Human, Mouse, Rat

### BackGround:

Ral A and Ral B constitute a distinct subfamily of Ras-related GTPases (i.e., GDP/GTP binding proteins). Ral proteins are activated by a unique nucleotide exchange factor, Ral GDS, and deactivated by a distinct GTPase-activating protein. Unlike Ras proteins, Ral A and Ral B fail to induce transformed foci when activated variants are expressed in various recipient cells. A potential downstream target of Ral, designated Ral BP-1, has been shown to contain a Rho-GTPase-activating domain. This Rho-GTPase-activating domain interacts preferentially with the Rho family member Cdc42. A Ras/Ral signaling pathway has been reported to mediate phospholipase D (PLD) activation by v-Src, thus indicating PLD as another downstream target of Ral A.

### Product:

Rabbit IgG, 1mg/ml in PBS with 0.02% sodium azide, 50% glycerol, pH7.2

### Molecular Weight:

95 kDa

### Swiss-Prot:

Q15311(Human) Q62172(Mouse) Q62796(Rat)

### Purification&Purity:

ProA affinity purified

### Applications:

WB:1:1,000-1:5,000

FC:1:50-1:100

IHC:1:50-1:200

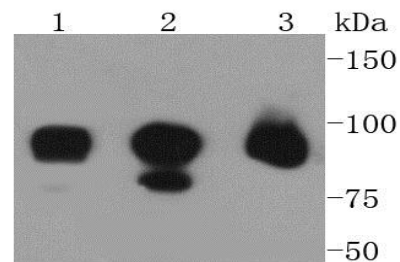
### Storage&Stability:

Store at +4 °C after thawing. Aliquot store at -20 °C or -80 °C. Avoid repeated freeze / thaw cycles.

### Specificity:

RALBP1 polyclonal antibody detects endogenous levels of RALBP1 protein.

### DATA:

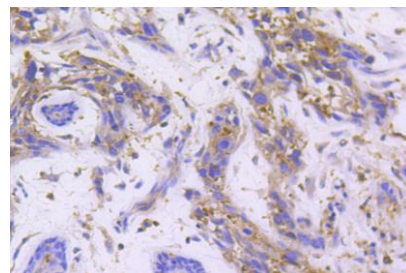


Western blot analysis of RALBP1 on different lysates using anti-RALBP1 antibody at 1/1,000 dilution. Positive control:

Lane 1: HCT116

Lane 2: Jurkat

Lane 3: 293T



Immunohistochemical analysis of paraffin-embedded human breast carcinoma tissue using anti-RALBP1 antibody. Counter stained with hematoxylin.

### Note:

For research use only, not for use in diagnostic procedure.

### Bioworld Technology, Inc.

Add: 1660 South Highway 100, Suite 500 St. Louis Park, MN 55416, USA.

Email: [info@bioworld.com](mailto:info@bioworld.com)

Tel: 6123263284

Fax: 6122933841

### Bioworld technology, co. Ltd.

Add: No 9, weidi road Qixia District Nanjing, 210046, P. R. China.

Email: [info@biogot.com](mailto:info@biogot.com)

Tel: 0086-025-68037686

Fax: 0086-025-68035151