

Ras polyclonal antibody

Catalog: BS91157

Host: Rabbit

Reactivity: Human, mouse, rat

BackGround:

Ras superfamily is a protein superfamily of small GTPases, which are all related, to a degree, to the Ras protein subfamily (the key human members of which are KRAS, NRAS, and HRAS). Receptor tyrosine kinases and G protein-coupled receptors activate Ras, which then stimulates the Raf-MEK-MAPK pathway. GTPase-activating proteins (GAP) normally facilitate the inactivation of Ras. However, research studies have shown that in 30% of human tumors, point mutations in Ras prevent the GAP-mediated inhibition of this pathway. The most common oncogenic Ras mutation found in tumors is Gly12 to Asp12 (G12D), which prevents Ras inactivation, possibly by increasing the overall rigidity of the protein. This antibody is predicted to react with H-Ras, N-Ras and K-Ras.

Product:

Rabbit IgG, 1mg/ml in PBS with 0.02% sodium azide, 50% glycerol, pH7.2

Molecular Weight:

21 kDa

Swiss-Prot:

P01111 P01112 P01116

Purification&Purity:

Peptide affinity purified

Applications:

WB:1:1,000

ICC:1:200

IHC:1:200

FC:1:100-1:200

Storage&Stability:

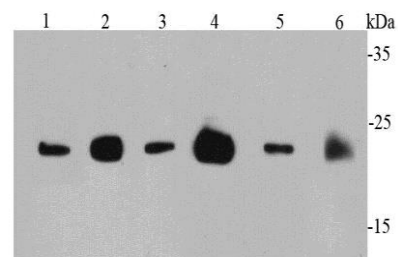
Store at +4 °C after thawing. Aliquot store at -20 °C or

-80 °C. Avoid repeated freeze / thaw cycles.

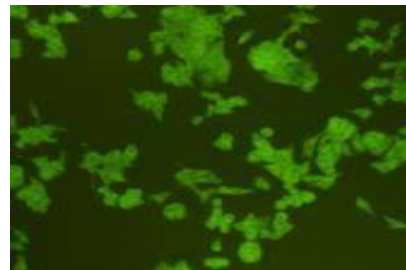
Specificity:

Ras polyclonal antibody detects endogenous levels of Ras protein.

DATA:



Western blot analysis of Ras on different cell lysates using anti-Ras antibody at 1/1000 dilution. Positive control: Lane 1: PC12 Lane 2: MCF-7 Lane 3: 293T Lane 4: Mouse brain Lane 5: Mouse intestine Lane 6: Rat brain



ICC staining Ras in HCT116 cells (green). Cells were fixed in para-formaldehyde, permeabilised with 0.25% Triton X100/PBS.

Note:

For research use only, not for use in diagnostic procedure.

Bioworld Technology, Inc.

Add: 1660 South Highway 100, Suite 500 St. Louis Park, MN 55416, USA.

Email: info@bioworld.com

Tel: 6123263284

Fax: 6122933841

Bioworld technology, co. Ltd.

Add: No 9, weidi road Qixia District Nanjing, 210046, P. R. China.

Email: info@biogot.com

Tel: 0086-025-68037686

Fax: 0086-025-68035151