

Rb polyclonal antibody

Catalog: BS91159

Host: Rabbit

Reactivity: Human, Mouse

BackGround:

Pediatric cancer retinoblastoma and the formation of other human tumors can be attributed to mutations in the retinoblastoma tumor suppressor gene. The retinoblastoma tumor suppressor gene product, known as Rb or pRb, regulates differentiation, apoptosis and cell cycle control by coordinating the cell cycle, at G1/S, with transcriptional machinery that includes the heterodimeric E2F family. During G1, cyclin D (D1, D2, D3)-dependent kinase-mediated phosphorylation of Rb at Ser 795 marks the conversion of Rb from a transcriptionally repressive, hypophosphorylated state to an inactive, phosphorylated state, which may be sustained through mitosis by differential phosphorylation of up to 16 putative serine or threonine residues, including Ser 249/Thr 252, Thr 373, Thr 356, Ser 780, Ser 807/Ser 811 and Thr 821/Thr 826. Hypophosphorylated Rb represses the transcription of genes controlling cell cycle through direct protein-protein interactions, by binding and inactivating the promoters of transcription factors, and through recruitment of histone deacetylase, which deacetylates promoter regions and enhances nucleosome formation, thereby masking transcription enhancing cis elements.

Product:

Rabbit IgG, 1mg/ml in PBS with 0.02% sodium azide, 50% glycerol, pH7.2

Molecular Weight:

105 kDa

Swiss-Prot:

P06400(Human) P13405(Mouse)

Purification&Purity:

ProA affinity purified

Applications:

WB:1:500-1:1,000

ICC:1:50-1:200

IHC:1:50-1:200

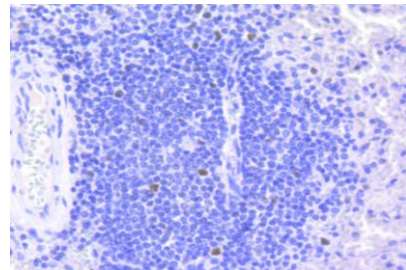
Storage&Stability:

Store at +4 °C after thawing. Aliquot store at -20 °C or -80 °C. Avoid repeated freeze / thaw cycles.

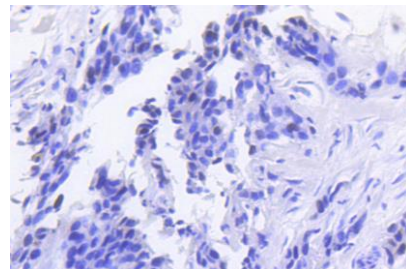
Specificity:

Rb polyclonal antibody detects endogenous levels of Rb protein.

DATA:



Immunohistochemical analysis of paraffin-embedded human spleen tissue using anti-Rb antibody. Counter stained with hematoxylin.



Immunohistochemical analysis of paraffin-embedded human breast carcinoma tissue using anti-Rb antibody. Counter stained with hematoxylin.

Note:

For research use only, not for use in diagnostic procedure.

Bioworld Technology, Inc.

Add: 1660 South Highway 100, Suite 500 St. Louis Park, MN 55416, USA.

Email: info@bioworld.com

Tel: 6123263284

Fax: 6122933841

Bioworld technology, co. Ltd.

Add: No 9, weidi road Qixia District Nanjing, 210046, P. R. China.

Email: info@biogot.com

Tel: 0086-025-68037686

Fax: 0086-025-68035151