

RBX1 polyclonal antibody

Catalog: BS91163

Host: Rabbit

Reactivity: Human, Mouse

BackGround:

Rbx1 (also designated ROC1 and Hrt1) and the closely related protein Rbx2 (also designated ROC2) are RING finger containing homologs of the yeast protein APC11, a member of the anaphase-promoting complex (APC). Rbx1 was shown to be a component of the von Hippel-Lindau (VHL) transcription elongation complex, which includes VHL, Elongin B, Elongin C and Cullin-2. Rbx1 interacts with Cullin-1 in the SCF (Skp1-Cdc53-F-box protein) ubiquitin ligase complex (2-4). Rbx1 functions as a common subunit of SCF complexes required for ubiquitination of various proteins including yeast G1 cyclins, I κ B α and b-catenin (2-4). Rbx1 was shown to enhance the ubiquitin ligase activity of the VHL/Cullin-2 complex, and of the SCF/Cullin-1 complex.

Product:

Rabbit IgG, 1mg/ml in PBS with 0.02% sodium azide, 50% glycerol, pH7.2

Molecular Weight:

12 kDa

Swiss-Prot:

P62877(Human) P62878(Mouse)

Purification&Purity:

Protein affinity purified

Applications:

WB:1:500

ICC:1:100-1:500

IHC:1:50-1:200

FC:1:50-1:100

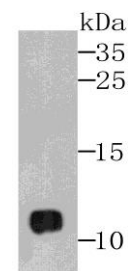
Storage&Stability:

Store at +4 °C after thawing. Aliquot store at -20 °C or -80 °C. Avoid repeated freeze / thaw cycles.

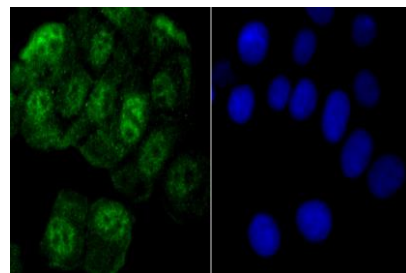
Specificity:

RBX1 polyclonal antibody detects endogenous levels of RBX1 protein.

DATA:



Western blot analysis of RBX1 on HepG2 cell lysates using anti-RBX1 antibody at 1/500 dilution.



ICC staining RBX1 in MCF-7 cells (green). The nuclear counter stain is DAPI (blue). Cells were fixed in paraformaldehyde, permeabilised with 0.25% Triton X100/PBS.

Note:

For research use only, not for use in diagnostic procedure.

Bioworld Technology, Inc.

Add: 1660 South Highway 100, Suite 500 St. Louis Park, MN 55416, USA.

Email: info@bioworld.com

Tel: 6123263284

Fax: 6122933841

Bioworld technology, co. Ltd.

Add: No 9, weidi road Qixia District Nanjing, 210046, P. R. China.

Email: info@biogot.com

Tel: 0086-025-68037686

Fax: 0086-025-68035151