

Reelin polyclonal antibody

Catalog: BS91164

Host: Rabbit

Reactivity: Human, Rat

BackGround:

Reelin (or Reln) is a large glycoprotein that is secreted by Cajal-Retzius cells in the forebrain and by granule neurons in the cerebellum. Reelin was shown to be mutated in "reeler" mice, a mutation that is associated with widespread disruption of laminated regions of the brain, leading to impaired motor coordination, tremors and ataxia. Reelin protein expression is complex and changes throughout development. Reelin appears to function upstream of Dab1 in a signaling pathway that controls cell positioning in the developing brain and is also thought to be a direct effector of the neurotrophin BDNF.

Product:

Rabbit IgG, 1mg/ml in PBS with 0.02% sodium azide, 50% glycerol, pH7.2

Molecular Weight:

388 kDa

Swiss-Prot:

P78509(Human) P58751(Rat)

Purification&Purity:

ProA affinity purified

Applications:

WB:1:500-1:1,000

IHC:1:50-1:200

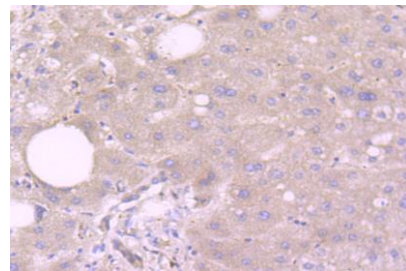
Storage&Stability:

Store at +4 °C after thawing. Aliquot store at -20 °C or -80 °C. Avoid repeated freeze / thaw cycles.

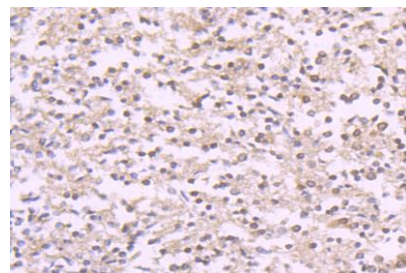
Specificity:

Reelin polyclonal antibody detects endogenous levels of Reelin protein.

DATA:



Immunohistochemical analysis of paraffin-embedded human liver tissue using anti-Reelin antibody. Counter stained with hematoxylin.



Immunohistochemical analysis of paraffin-embedded human brain tissue using anti-Reelin antibody. Counter stained with hematoxylin.

Note:

For research use only, not for use in diagnostic procedure.

Bioworld Technology, Inc.

Add: 1660 South Highway 100, Suite 500 St. Louis Park, MN 55416, USA.

Email: info@bioworld.com

Tel: 6123263284

Fax: 6122933841

Bioworld technology, co. Ltd.

Add: No 9, weidi road Qixia District Nanjing, 210046, P. R. China.

Email: info@biogot.com

Tel: 0086-025-68037686

Fax: 0086-025-68035151