

## RFP polyclonal antibody

Catalog: BS91167

Host: Rabbit

Reactivity: All

### BackGround:

Red fluorescent protein cloned from *Entacmaea quadricolor* eqFP611 (Uniprot IDQ8ISF8) is an important tool in biotechnology and cell biology as a spectrally distinct companion or substitute for the green fluorescent protein (GFP; from *Aequorea jellyfish*).

### Product:

Rabbit IgG, 1mg/ml in PBS with 0.02% sodium azide, 50% glycerol, pH7.2

### Molecular Weight:

26 kDa

### Swiss-Prot:

Q8ISF8(*Entacmaea quadricolor* eqFP611)

### Purification&Purity:

ProA affinity purified

### Applications:

WB:1:500-1:2,000

ICC:1:50-1:200

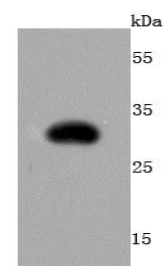
### Storage&Stability:

Store at +4 °C after thawing. Aliquot store at -20 °C or -80 °C. Avoid repeated freeze / thaw cycles.

### Specificity:

RFP polyclonal antibody detects endogenous levels of RFP protein.

### DATA:



Western blot analysis of RFP on RFP recombinant protein using anti-RFP antibody at 1/500 dilution.

### Note:

For research use only, not for use in diagnostic procedure.

### Bioworld Technology, Inc.

Add: 1660 South Highway 100, Suite 500 St. Louis Park, MN 55416, USA.

Email: [info@bioworld.com](mailto:info@bioworld.com)

Tel: 6123263284

Fax: 6122933841

### Bioworld technology, co. Ltd.

Add: No 9, weidi road Qixia District Nanjing, 210046, P. R. China.

Email: [info@biogot.com](mailto:info@biogot.com)

Tel: 0086-025-68037686

Fax: 0086-025-68035151