

ROBO1 polyclonal antibody

Catalog: BS91174

Host: Rabbit

Reactivity: Human, Mouse

BackGround:

Specific cells in the midline separate the left and right halves of the central nervous system and play many roles in guiding the growth cone behavior. In vertebrate spinal cord, insect abdominal nerves and nematodes, midline cells produce induced cues, such as neectins and slits, respectively, as attractants and repellents. respectively. These cells can serve as gatekeepers to prevent axons from passing through the midline and to guide the growth cone in response to the switching of lead cues beyond the crossing. One such gatherer, Robo, is an axon guidance receptor that defines a new subfamily of proteins from fruit flies to mammalian conserved Ig superfamily proteins. Robo acts as a receptor for the repellent Slit and functions in a cell-autonomous manner. Non-intersecting axons express high levels of Robo and cross axons to express low levels of Robo and then reach midline and high levels of crossover. Robo1 and Robo2 are two human homologs of *Drosophila megalopolis*. Robo1 is also homologous to the *C. elegans* gene *sax3*, while Robo2 is homologous to zebrafish genes.

Product:

Rabbit IgG, 1mg/ml in PBS with 0.02% sodium azide, 50% glycerol, pH7.2

Molecular Weight:

180 kDa

Swiss-Prot:

Q9Y6N7(Human) O89026(Mouse)

Purification&Purity:

Peptide affinity purified

Applications:

ICC:1:100-1:500

IHC:1:50-1:200

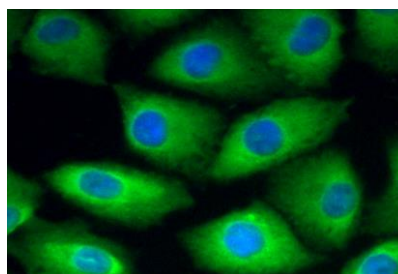
Storage&Stability:

Store at +4 °C after thawing. Aliquot store at -20 °C or -80 °C. Avoid repeated freeze / thaw cycles.

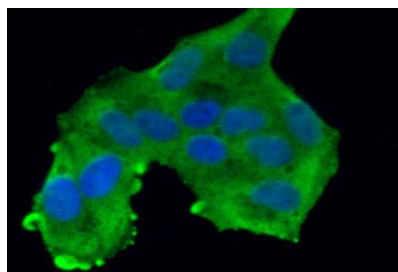
Specificity:

ROBO1 polyclonal antibody detects endogenous levels of ROBO1 protein.

DATA:



ICC staining ROBO1 in A549 cells (green). The nuclear counter stain is DAPI (blue). Cells were fixed in paraformaldehyde, permeabilised with 0.25% Triton X100/PBS.



ICC staining ROBO1 in HeLa cells (green). The nuclear counter stain is DAPI (blue). Cells were fixed in paraformaldehyde, permeabilised with 0.25% Triton X100/PBS.

Note:

For research use only, not for use in diagnostic procedure.

Bioworld Technology, Inc.

Add: 1660 South Highway 100, Suite 500 St. Louis Park, MN 55416, USA.

Email: info@bioworld.com

Tel: 6123263284

Fax: 6122933841

Bioworld technology, co. Ltd.

Add: No 9, weidi road Qixia District Nanjing, 210046, P. R. China.

Email: info@biogot.com

Tel: 0086-025-68037686

Fax: 0086-025-68035151