

RPE65 polyclonal antibody

Catalog: BS91180

Host: Rabbit

Reactivity: Human, Mouse, Rat

BackGround:

The retinal pigment epithelium (RPE) is a monolayer simple epithelium in proximity to the outer surface of the retinal photoreceptor cells. Retinal pigment epithelium-specific protein (RPE65) is a 65kDa protein belonging to the beta-carotene dioxygenase family. This protein is important in 11-cis retinal production as well as in visual pigment regeneration. RPE65 is attached to the membrane by a lipid anchor when palmitoylated (membrane form) and soluble when unpalmitoylated. The soluble form of the protein binds vitamin A. Defects in RPE65 causes autosomal dominant retinitis pigmentosa and/or Leber congenital amaurosis type 2.

Product:

Rabbit IgG, 1mg/ml in PBS with 0.02% sodium azide, 50% glycerol, pH7.2

Molecular Weight:

61 kDa

Swiss-Prot:

Q16518(Human) Q91ZQ5(Mouse) O70276(Rat)

Purification&Purity:

ProA affinity purified

Applications:

WB:1:1,000-1:2,000

IP:1:10-1:50

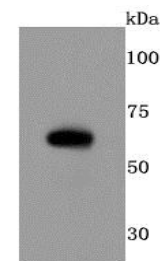
Storage&Stability:

Store at +4 °C after thawing. Aliquot store at -20 °C or -80 °C. Avoid repeated freeze / thaw cycles.

Specificity:

RPE65 polyclonal antibody detects endogenous levels of RPE65 protein.

DATA:



Western blot analysis of RPE65 on mouse eyeball cells lysates using anti-RPE65 antibody at 1/500 dilution.

Note:

For research use only, not for use in diagnostic procedure.

Bioworld Technology, Inc.

Add: 1660 South Highway 100, Suite 500 St. Louis Park, MN 55416, USA.

Email: info@bioworld.com

Tel: 6123263284

Fax: 6122933841

Bioworld technology, co. Ltd.

Add: No 9, weidi road Qixia District Nanjing, 210046, P. R. China.

Email: info@biogot.com

Tel: 0086-025-68037686

Fax: 0086-025-68035151