

RPS19 polyclonal antibody

Catalog: BS91181

Host: Rabbit

Reactivity: Human, Mouse, Rat

Background:

Ribosomal subunits are synthesized in the nucleus and mature 40S and 60S subunits are exported stoichiometrically into the cytoplasm. Together these subunits are composed of four RNA species and approximately 80 structurally distinct proteins. Ribosomal proteins have the ability to pass through the nuclear envelope in the native state, making them the largest of the structures accommodated by the nuclear pore complexes. The nuclear export of ribosomal subunits is a unidirectional, saturable and energy-dependent process. Ribosomal Protein S19 (RPS19) is a 145 amino acids protein expressed in various human adult tissues, including bone marrow, peripheral blood, spleen, liver and nonhematopoietic tissues. RPS19 expression decreases during terminal erythroid differentiation; a deficiency of RPS19 blocks proliferation of immature erythroid progenitor cells altogether. Mutations in the RPS19 gene are linked with Diamond-Blackfan anemia (DBA), a congenital, hypoplastic, red cell aplasia that occasionally presents with physical anomalies.

Product:

Rabbit IgG, 1mg/ml in PBS with 0.02% sodium azide, 50% glycerol, pH7.2

Molecular Weight:

16 kDa

Swiss-Prot:

P39019(Human) Q9CZX8(Mouse) P17074(Rat)

Purification&Purity:

ProA affinity purified

Applications:

WB:1:500-1:1,000

IHC:1:50-1:200

IP:1:10-1:50

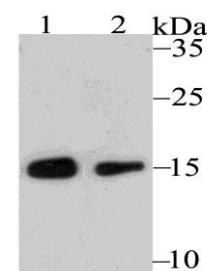
Storage&Stability:

Store at +4 °C after thawing. Aliquot store at -20 °C or -80 °C. Avoid repeated freeze / thaw cycles.

Specificity:

RPS19 polyclonal antibody detects endogenous levels of RPS19 protein.

DATA:

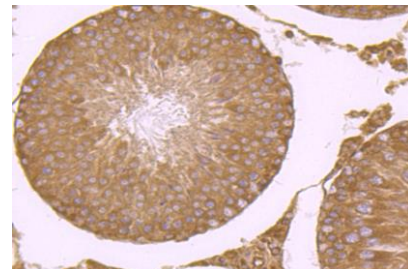


Western blot analysis of RPS19 on HeLa cell using anti-RPS19 antibody at 1/500 dilution.

Positive control:

Lane 1: CRC

Lane 2: MCF-7



Immunohistochemical analysis of paraffin-embedded rat testis tissue using anti-RPS19 antibody. Counter stained with hematoxylin.

Note:

For research use only, not for use in diagnostic procedure.

Bioworld Technology, Inc.

Add: 1660 South Highway 100, Suite 500 St. Louis Park, MN 55416, USA.

Email: info@bioworld.com

Tel: 6123263284

Fax: 6122933841

Bioworld technology, co. Ltd.

Add: No 9, weidi road Qixia District Nanjing, 210046, P. R. China.

Email: info@biogot.com

Tel: 0086-025-68037686

Fax: 0086-025-68035151