

RRM1 polyclonal antibody

Catalog: BS91184

Host: Rabbit

Reactivity: Human, Mouse

BackGround:

Provides the precursors necessary for DNA synthesis. Catalyzes the biosynthesis of deoxyribonucleotides from the corresponding ribonucleotides. Belongs to the ribonucleoside diphosphate reductase large chain family. Contains 1 ATP-cone domain.

Product:

Rabbit IgG, 1mg/ml in PBS with 0.02% sodium azide, 50% glycerol, pH7.2

Molecular Weight:

90 kDa

Swiss-Prot:

P23921(Human) P07742(Mouse)

Purification&Purity:

ProA affinity purified

Applications:

WB:1:500-1:2,000

IHC:1:50-1:100

FC:1:50-1:100

IP:1:10-1:50

Storage&Stability:

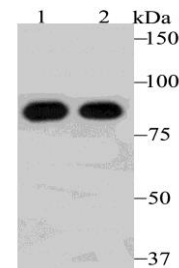
Store at +4 °C after thawing. Aliquot store at -20 °C or -80 °C. Avoid repeated freeze / thaw cycles.

Specificity:

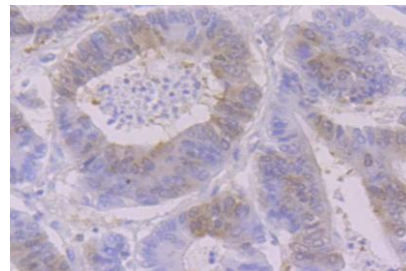
RRM1 polyclonal antibody detects endogenous levels of

RRM1 protein.

DATA:



Western blot analysis of RRM1 on mouse thymus tissue (1) and A431 cell (2) lysate using anti-RRM1 antibody at 1/500 dilution.



Immunohistochemical analysis of paraffin-embedded human colon tissue using anti-RRM1 antibody. Counter stained with hematoxylin.

Note:

For research use only, not for use in diagnostic procedure.

Bioworld Technology, Inc.

Add: 1660 South Highway 100, Suite 500 St. Louis Park, MN 55416, USA.

Email: info@bioworld.com

Tel: 6123263284

Fax: 6122933841

Bioworld technology, co. Ltd.

Add: No 9, weidi road Qixia District Nanjing, 210046, P. R. China.

Email: info@biogot.com

Tel: 0086-025-68037686

Fax: 0086-025-68035151