

RRM2 polyclonal antibody

Catalog: BS91185

Host: Rabbit

Reactivity: Human

BackGround:

Belongs to the ribonucleoside diphosphate reductase small chain family. Provides the precursors necessary for DNA synthesis. Catalyzes the biosynthesis of deoxyribonucleotides from the corresponding ribonucleotides. Inhibits Wnt signaling. It has two regulatory sites: the specificity site, which controls substrate specificity, and the activity site which regulates overall catalytic activity. A substrate-binding catalytic site, located on M1, is formed only in the presence of the second subunit M2.

Product:

Rabbit IgG, 1mg/ml in PBS with 0.02% sodium azide, 50% glycerol, pH7.2

Molecular Weight:

45 kDa

Swiss-Prot:

P31350(Human)

Purification&Purity:

ProA affinity purified

Applications:

WB:1:500-1:2,000

ICC:1:20-1:50

IP:1:10-1:50

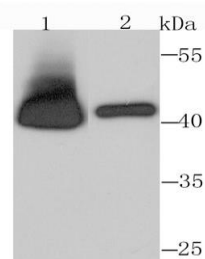
Storage&Stability:

Store at +4 °C after thawing. Aliquot store at -20 °C or -80 °C. Avoid repeated freeze / thaw cycles.

Specificity:

RRM2 polyclonal antibody detects endogenous levels of RRM2 protein.

DATA:



Western blot analysis of RRM2 on HeLa (1) and HepG2 (2) cell lysate using anti-RRM2 antibody at 1/1,000 dilution.

Note:

For research use only, not for use in diagnostic procedure.

Bioworld Technology, Inc.

Add: 1660 South Highway 100, Suite 500 St. Louis Park, MN 55416, USA.

Email: info@bioworld.com

Tel: 6123263284

Fax: 6122933841

Bioworld technology, co. Ltd.

Add: No 9, weidi road Qixia District Nanjing, 210046, P. R. China.

Email: info@biogot.com

Tel: 0086-025-68037686

Fax: 0086-025-68035151