

p70 S6 kinase β (S417) polyclonal antibody

Catalog: BS9119

Host: Rabbit

Reactivity: Human, Mouse

BackGround:

In studies to elucidate key regulatory pathways in signal transduction, several protein Serine/Threonine (Ser/Thr) kinases have been identified, including two distinct families of 40S ribosomal protein S6 Ser/Thr kinases present in somatic animal cells, designated p70 S6 kinase and p90 Rsk kinase. p90 Rsk kinase is maximally activated within minutes of addition of growth factors or phorbol ester to cultured cells followed by activation of p70 S6 kinase. Both enzymes are regulated by Serine/Threonine phosphorylation, suggesting that specific kinases may exist upstream in the signaling pathway that regulate these kinases.

Product:

1 mg/ml in Phosphate buffered saline (PBS) with 0.05% sodium azide, approx. pH 7.2.

Molecular Weight:

~ 53 kDa

Swiss-Prot:

Q9UBS0

Purification&Purity:

The antibody was affinity-purified from rabbit antiserum by affinity-chromatography using epitope-specific immunogen and the purity is > 95% (by SDS-PAGE).

Applications:

WB: 1:500~1:1000

IHC: 1:50~1:200

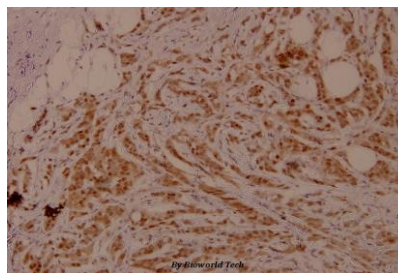
Storage&Stability:

Store at 4 °C short term. Aliquot and store at -20 °C long term. Avoid freeze-thaw cycles.

Specificity:

p70 S6 kinase β (S417) polyclonal antibody detects endogenous levels of p70 S6 kinase β protein.

DATA:



Immunohistochemistry (IHC) analyzes of p70 S6 kinase β (S417) pAb in paraffin-embedded human breast carcinoma tissue at 1:100.

Note:

For research use only, not for use in diagnostic procedure.

Bioworld Technology, Inc.

Add: 1660 South Highway 100, Suite 500 St. Louis Park, MN 55416, USA.

Email: info@bioworld.com

Tel: 6123263284

Fax: 6122933841

Bioworld technology, co. Ltd.

Add: No 9, weidi road Qixia District Nanjing, 210046, P. R. China.

Email: info@biogot.com

Tel: 0086-025-68037686

Fax: 0086-025-68035151