

RYR1 polyclonal antibody

Catalog: BS91190

Host: Rabbit

Reactivity: Human, Mouse

BackGround:

Calcium channel that mediates the release of Ca²⁺ from the sarcoplasmic reticulum into the cytoplasm and thereby plays a key role in triggering muscle contraction following depolarization of T-tubules. Repeated very high-level exercise increases the open probability of the channel and leads to Ca²⁺ leaking into the cytoplasm. Can also mediate the release of Ca²⁺ from intracellular stores in neurons, and may thereby promote prolonged Ca²⁺ signaling in the brain. Required for normal embryonic development of muscle fibers and skeletal muscle. Required for normal heart morphogenesis, skin development and ossification during embryogenesis.

Product:

Rabbit IgG, 1mg/ml in PBS with 0.02% sodium azide, 50% glycerol, pH7.2

Molecular Weight:

565 kDa

Swiss-Prot:

P21817(Human) E9PZQ0(Mouse)

Purification&Purity:

Peptide affinity purified.

Applications:

DotBlot:1:500-1:1,000

IHC:1:50-1:200

FC:1:50-1:100

Storage&Stability:

Store at +4 °C after thawing. Aliquot store at -20 °C. Avoid repeated freeze / thaw cycles.

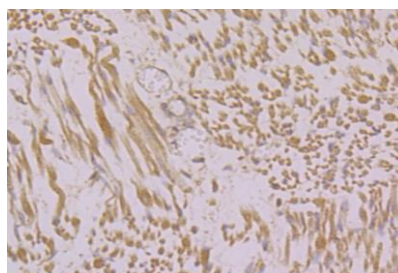
Specificity:

RYR1 polyclonal antibody detects endogenous levels of RYR1 protein.

DATA:



Dot blot analysis of anti-RYR1 immunization peptide on PVDF. 1ug, 2ug and 4ug peptides were given in this test. Anti-RYR1 antibody was diluted with 1/500.



Immunohistochemical analysis of paraffin-embedded human fetal skeletal muscle tissue using anti-RYR1 antibody. Counter stained with hematoxylin.

Note:

For research use only, not for use in diagnostic procedure.

Bioworld Technology, Inc.

Add: 1660 South Highway 100, Suite 500 St. Louis Park, MN 55416, USA.

Email: info@bioworld.com

Tel: 6123263284

Fax: 6122933841

Bioworld technology, co. Ltd.

Add: No 9, weidi road Qixia District Nanjing, 210046, P. R. China.

Email: info@biogot.com

Tel: 0086-025-68037686

Fax: 0086-025-68035151