

RYR2 polyclonal antibody

Catalog: BS91191

Host: Rabbit

Reactivity: Human, Mouse, Rat

BackGround:

Calcium channel that mediates the release of Ca²⁺ from the sarcoplasmic reticulum into the cytoplasm and thereby plays a key role in triggering cardiac muscle contraction. Aberrant channel activation can lead to cardiac arrhythmia. In cardiac myocytes, calcium release is triggered by increased Ca²⁺ levels due to activation of the L-type calcium channel CACNA1C. The calcium channel activity is modulated by formation of heterotetramers with RYR3. Required for cellular calcium ion homeostasis. Required for embryonic heart development.

Product:

Rabbit IgG, 1mg/ml in PBS with 0.02% sodium azide, 50% glycerol, pH7.2

Molecular Weight:

565 kDa

Swiss-Prot:

Q92736(Human) E9Q401(Mouse) B0LPN4(Rat)

Purification&Purity:

Peptide affinity purified.

Applications:

WB:1:500

ICC:1:50-1:100

IHC:1:50-1:200

FC:1:50-1:100

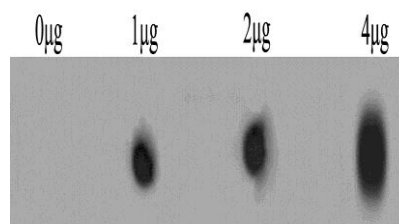
Storage&Stability:

Store at +4 °C after thawing. Aliquot store at -20 °C. Avoid repeated freeze / thaw cycles.

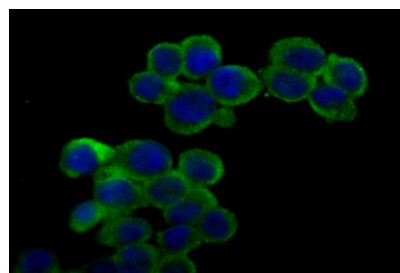
Specificity:

RYR2 polyclonal antibody detects endogenous levels of RYR2 protein.

DATA:



Dot blot analysis of anti-RYR2 immunization peptide on PVDF. 1µg, 2µg and 4µg peptides were given in this test. Anti-RYR2 antibody was diluted with 1/500.



ICC staining RYR2 in 293T cells (green). The nuclear counter stain is DAPI (blue). Cells were fixed in paraformaldehyde, permeabilised with 0.25% Triton X100/PBS.

Note:

For research use only, not for use in diagnostic procedure.

Bioworld Technology, Inc.

Add: 1660 South Highway 100, Suite 500 St. Louis Park, MN 55416, USA.

Email: info@bioworld.com

Tel: 6123263284

Fax: 6122933841

Bioworld technology, co. Ltd.

Add: No 9, weidi road Qixia District Nanjing, 210046, P. R. China.

Email: info@biogot.com

Tel: 0086-025-68037686

Fax: 0086-025-68035151