

## S100 $\alpha$ 6 polyclonal antibody

Catalog: BS91197

Host: Rabbit

Reactivity: Human, Mouse, Rat

### BackGround:

Calcyclin, also known as Prolactin receptor-associated protein (PRA), growth factor-inducible protein 2A9, S-100 calcium-binding protein A6 (S-100A6) or MLN 4, is a homodimeric member of the S-100 calcium-binding protein family whose expression is upregulated in proliferating and differentiating cells. Calcyclin is inducible by growth factors and overexpressed in acute myeloid leukemias. It is expressed in a cell-specific manner in subpopulations of neurons and astrocytes and in epithelial cells and fibroblasts. Calcyclin is a specific target of S-100B protein in vivo. The binding of Calcyclin to S-100B is stabilized by S-100B-bound calcium and zinc. Calcyclin associates with both Annexin XI and CacyBP (calcyclin-binding protein). It functions to activate several processes along the calcium signal transduction pathway including the regulation of cell growth, proliferation, secretion and exocytosis.

### Product:

Rabbit IgG, 1mg/ml in PBS with 0.02% sodium azide, 50% glycerol, pH7.2

### Molecular Weight:

10 kDa

### Swiss-Prot:

P06703(Human) P14069(Mouse) P05964(Rat)

### Purification&Purity:

ProA affinity purified

### Applications:

WB:1:1,000-1:5,000

ICC:1:100-1:500

IHC:1:50-1:200

FC:1:50-1:100

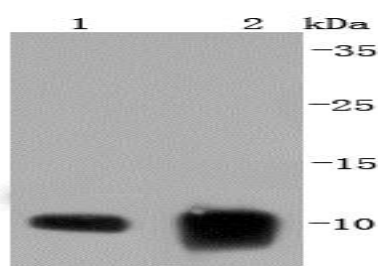
### Storage&Stability:

Store at +4 °C after thawing. Aliquot store at -20 °C or -80 °C. Avoid repeated freeze / thaw cycles.

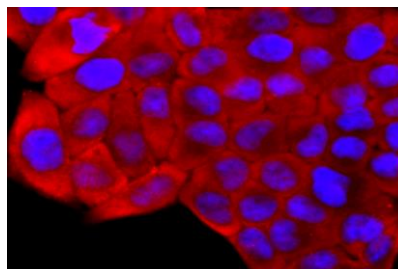
### Specificity:

S100 $\alpha$ 6 polyclonal antibody detects endogenous levels of S100 $\alpha$ 6 protein.

### DATA:



Western blot analysis of S100 alpha 6 on different lysates using anti-S100 alpha 6 antibody at 1/1,000 dilution. Positive control: Lane 1: A431 Lane 2: Mouse lung



ICC staining S100 alpha 6 in HeLa cells (red). The nuclear counter stain is DAPI (blue). Cells were fixed in paraformaldehyde, permeabilised with 0.25% Triton X100/PBS.

### Note:

For research use only, not for use in diagnostic procedure.

### Bioworld Technology, Inc.

Add: 1660 South Highway 100, Suite 500 St. Louis Park, MN 55416, USA.

Email: [info@bioworld.com](mailto:info@bioworld.com)

Tel: 6123263284

Fax: 6122933841

### Bioworld technology, co. Ltd.

Add: No 9, weidi road Qixia District Nanjing, 210046, P. R. China.

Email: [info@biogot.com](mailto:info@biogot.com)

Tel: 0086-025-68037686

Fax: 0086-025-68035151