

Gab 2 (L617) polyclonal antibody

Catalog: BS9120

Host: Rabbit

Reactivity: Human, Mouse, Rat

BackGround:

Critical components of this process include adapter protein such as Shc, IRS-1 and Gab 1 (GRB-associated binder-1) that lack detectable catalytic activity. These are immediate substrates of receptor tyrosine kinase activity and serve to link activated receptors to downstream signaling components. Whereas Shc has been implicated in signaling by diverse receptor families, IRS-1 serves primarily as the major Insulin receptor substrate. Shc and Gab 1 also participate in Insulin signaling by linking the Insulin receptor to Ras by forming complexes with GRB2 (another adapter protein) and Sos independently of IRS-1. The Gap 1 related protein, Gab 2, associates with SH2 domain-containing proteins, such as SHP2, and it is involved in a novel pathway for cytokine-induced gene activation.

Product:

1 mg/ml in Phosphate buffered saline (PBS) with 0.05% sodium azide, approx. pH 7.2.

Molecular Weight:

~ 74 kDa

Swiss-Prot:

Q9UQC2

Purification&Purity:

The antibody was affinity-purified from rabbit antiserum by affinity-chromatography using epitope-specific im-

munogen and the purity is > 95% (by SDS-PAGE).

Applications:

WB: 1:500~1:1000

IHC: 1:50~1:200

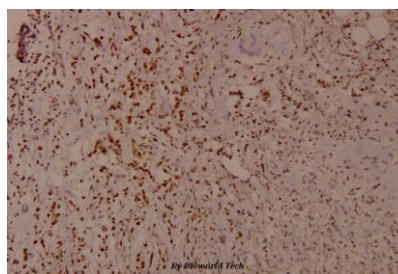
Storage&Stability:

Store at 4 °C short term. Aliquot and store at -20 °C long term. Avoid freeze-thaw cycles.

Specificity:

Gab 2 (L617) polyclonal antibody detects endogenous levels of Gab 2 protein.

DATA:



Immunohistochemistry (IHC) analyzes of Gab 2 (L617) pAb in paraffin-embedded human breast carcinoma tissue at 1:100.

Note:

For research use only, not for use in diagnostic procedure.

Bioworld Technology, Inc.

Add: 1660 South Highway 100, Suite 500 St. Louis Park, MN 55416, USA.

Email: info@bioworld.com

Tel: 6123263284

Fax: 6122933841

Bioworld technology, co. Ltd.

Add: No 9, weidi road Qixia District Nanjing, 210046, P. R. China.

Email: info@biogot.com

Tel: 0086-025-68037686

Fax: 0086-025-68035151