

Sarcoglycan delta polyclonal antibody

Catalog: BS91203

Host: Rabbit

Reactivity: Human

BackGround:

Component of the sarcoglycan complex, a subcomplex of the dystrophin-glycoprotein complex which forms a link between the F-actin cytoskeleton and the extracellular matrix. Defects in SGCD are the cause of limb-girdle muscular dystrophy type 2F (LGMD2F) [MIM:601287]. LGMD2F is an autosomal recessive disorder. Defects in SGCD are the cause of cardiomyopathy dilated type 1L (CMD1L) [MIM:606685]. Dilated cardiomyopathy is a disorder characterized by ventricular dilation and impaired systolic function, resulting in congestive heart failure and arrhythmia. Patients are at risk of premature death.

Product:

Rabbit IgG, 1mg/ml in PBS with 0.02% sodium azide, 50% glycerol, pH7.2

Molecular Weight:

35 kDa

Swiss-Prot:

Q92629(Human)

Purification&Purity:

ProA affinity purified

Applications:

WB:1:500-1:2,000

IHC:1:50-1:200

IP:1:10-1:50

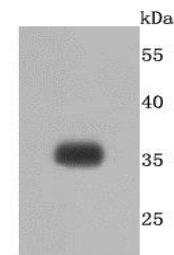
Storage&Stability:

Store at +4 °C after thawing. Aliquot store at -20 °C or -80 °C. Avoid repeated freeze / thaw cycles.

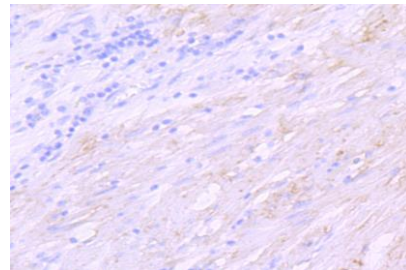
Specificity:

Sarcoglycan delta polyclonal antibody detects endogenous levels of Sarcoglycan delta protein.

DATA:



Western blot analysis of delta Sarcoglycan on human lung cells lysates using anti- delta Sarcoglycan antibody at 1/500 dilution.



Immunohistochemical analysis of paraffin-embedded human stomach cancer tissue using anti- delta Sarcoglycan antibody. Counter stained with hematoxylin.

Note:

For research use only, not for use in diagnostic procedure.

Bioworld Technology, Inc.

Add: 1660 South Highway 100, Suite 500 St. Louis Park, MN 55416, USA.

Email: info@bioworld.com

Tel: 6123263284

Fax: 6122933841

Bioworld technology, co. Ltd.

Add: No 9, weidi road Qixia District Nanjing, 210046, P. R. China.

Email: info@biogot.com

Tel: 0086-025-68037686

Fax: 0086-025-68035151