

Sarcoglycan polyclonal antibody

Catalog: BS91205

Host: Rabbit

Reactivity: Human, Mouse

BackGround:

The sarcoglycan transmembrane proteins are members of the dystrophin complex. Sarcoglycans cluster together to form a complex, which is localized in the cell membrane of skeletal, cardiac and smooth muscle fibers. Four sarcoglycan subunit proteins, designated α -, β -, γ - and δ -sarcoglycan, form a complex on the skeletal muscle cell surface membrane. A genetic defect in any one of these proteins causes the loss or marked decrease of the whole sarcoglycan complex, which is observed in the autosomal recessive muscular dystrophy, sarcoglycanopathy. In smooth muscle, β - and δ -sarcoglycans are associated with ϵ -sarcoglycan, a glycoprotein homologous to α -sarcoglycan. Additionally, a complete deficiency in δ -sarcoglycan is the cause of the Syrian hamster BIO.14 cardiomyopathy.

Product:

Rabbit IgG, 1mg/ml in PBS with 0.02% sodium azide, 50% glycerol, pH7.2

Molecular Weight:

32 kDa

Swiss-Prot:

Q13326(Human)

Purification&Purity:

ProA affinity purified

Applications:

WB:1:500-1:2,000

IP:1:50-1:100

IHC:1:50-1:200

Storage&Stability:

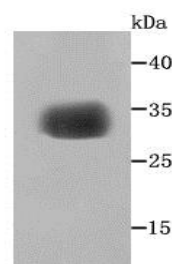
Store at +4 °C after thawing. Aliquot store at -20 °C or

-80 °C. Avoid repeated freeze / thaw cycles.

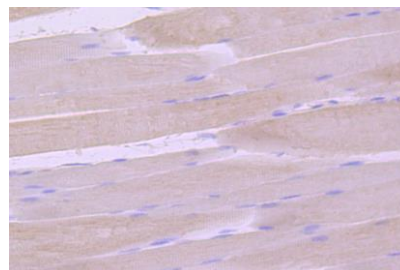
Specificity:

Sarcoglycan polyclonal antibody detects endogenous levels of Sarcoglycan protein.

DATA:



Western blot analysis of gamma Sarcoglycan on human skeletal muscle cells lysates using anti- gamma Sarcoglycan antibody at 1/500 dilution.



Immunohistochemical analysis of paraffin-embedded mouse skeletal muscle tissue using anti-gamma Sarcoglycan antibody. Counter stained with hematoxylin.

Note:

For research use only, not for use in diagnostic procedure.

Bioworld Technology, Inc.

Add: 1660 South Highway 100, Suite 500 St. Louis Park, MN 55416, USA.

Email: info@bioworld.com

Tel: 6123263284

Fax: 6122933841

Bioworld technology, co. Ltd.

Add: No 9, weidi road Qixia District Nanjing, 210046, P. R. China.

Email: info@biogot.com

Tel: 0086-025-68037686

Fax: 0086-025-68035151