

## SATB1 polyclonal antibody

Catalog: BS91208

Host: Rabbit

Reactivity: Human, Mouse, Rat

### BackGround:

The homeoproteins CCAAT displacement protein (CDP) and special AT-rich sequence binding protein 1 (SATB1) are transcriptional repressors of many cellular genes, and they participate in cell development and cell type differentiation. SATB1 is expressed primarily in thymocytes, and, like CDP, it also contains a distinct homeobox DNA-binding domain that is essential for DNA binding. SATB1 and CDP interact through these homeodomains and synergistically function as mediators of gene expression. SATB1 contains an additional domain that has a higher affinity for DNA and specifically facilitates the direct association between SATB1 and the nuclear matrix attachment regions (MARs) of DNA. MARs are specific DNA sequences that bind to the nuclear matrix and form the base of chromosomal loops that organize the chromosomes and regulate DNA transcription and replication within the nucleus. The association of SATB1 with the core unwinding element within the base-unpairing region of MARs requires both the MAR and homeobox binding domains of SATB1.

### Product:

Rabbit IgG, 1mg/ml in PBS with 0.02% sodium azide, 50% glycerol, pH7.2

### Molecular Weight:

100 kDa

### Swiss-Prot:

Q01826(Human) Q60611(Mouse) Unigene:233782(Rat)

### Purification&Purity:

ProA affinity purified

### Applications:

WB:1:1,000

ICC:1:50-1:200

IHC:1:50-1:200

FC:1:50-1:100

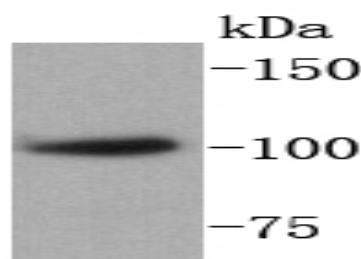
### Storage&Stability:

Store at +4 °C after thawing. Aliquot store at -20 °C or -80 °C. Avoid repeated freeze / thaw cycles.

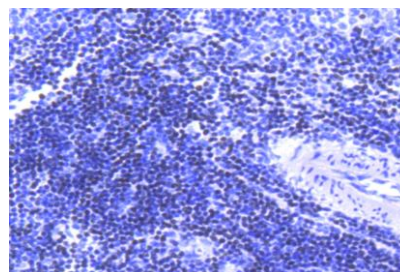
### Specificity:

SATB1 polyclonal antibody detects endogenous levels of SATB1 protein.

### DATA:



Western blot analysis of SATB1 on human thymus lysates using anti-SATB1 antibody at 1/1,000 dilution.



Immunohistochemical analysis of paraffin-embedded rat spleen tissue using anti-SATB1 antibody. Counter stained with hematoxylin.

### Note:

For research use only, not for use in diagnostic procedure.

### Bioworld Technology, Inc.

Add: 1660 South Highway 100, Suite 500 St. Louis Park, MN 55416, USA.

Email: [info@bioworld.com](mailto:info@bioworld.com)

Tel: 6123263284

Fax: 6122933841

### Bioworld technology, co. Ltd.

Add: No 9, weidi road Qixia District Nanjing, 210046, P. R. China.

Email: [info@biogot.com](mailto:info@biogot.com)

Tel: 0086-025-68037686

Fax: 0086-025-68035151