

SERCA2 polyclonal antibody

Catalog: BS91223

Host: Rabbit

Reactivity: Human, Mouse, Rat

BackGround:

ATP dependent calcium pumps are responsible, in part, for the maintenance of low cytoplasmic free calcium concentrations. The ATP pumps that reside in intracellular organelles are encoded by a family of structurally related enzymes, termed the sarcoplasmic or endoplasmic reticulum calcium (SERCA) ATPases. The sarcoplasmic reticulum of striated muscle is a specialized intracellular membrane system that plays a critical role in the contraction and relaxation of muscle. The SERCAs mediate Ca²⁺ uptake into intracellular stores. SERCA-mediated Ca²⁺ uptake induces and maintains muscular relaxation. The SERCA1 gene is exclusively expressed in type II (fast) skeletal muscle. The SERCA2 gene is subject to tissue-dependent processing which is responsible for the generation of the SERCA2a muscle-specific form expressed in type I (slow) skeletal, cardiac and smooth muscle, and the SERCA2b isoform expressed in all cell types. The SERCA3 gene is not as well characterized and is found in non-muscle cells. SERCA2 plays an important part in regulating cardiac contractile function. SERCA3 is an isoform expressed in several cell types including platelets, lymphoid cells and mast cells. SERCA1, SERCA2 and SERCA3 all undergo alternative splicing.

Product:

Rabbit IgG, 1mg/ml in PBS with 0.02% sodium azide, 50% glycerol, pH7.2

Molecular Weight:

115 kDa

Swiss-Prot:

P16615(Human) O55143(Mouse) P11507(Rat)

Purification&Purity:

ProA affinity purified

Applications:

WB:1:1,000

ICC:1:50-1:200

IHC:1:50-1:200

FC:1:50-1:100

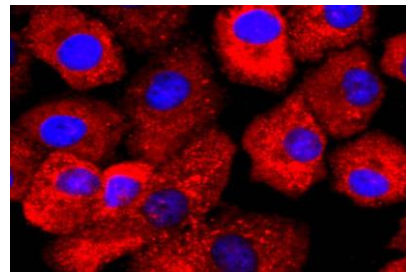
Storage&Stability:

Store at +4 °C after thawing. Aliquot store at -20 °C or -80 °C. Avoid repeated freeze / thaw cycles.

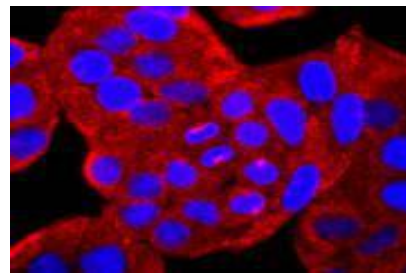
Specificity:

SERCA2 polyclonal antibody detects endogenous levels of SERCA2 protein.

DATA:



ICC staining SERCA2 in A549 cells (red). The nuclear counter stain is DAPI (blue). Cells were fixed in paraformaldehyde, permeabilised with 0.25% Triton X100/PBS.



ICC staining SERCA2 in HeLa cells (red). The nuclear counter stain is DAPI (blue). Cells were fixed in paraformaldehyde, permeabilised with 0.25% Triton X100/PBS.

Note:

For research use only, not for use in diagnostic procedure.

Bioworld Technology, Inc.

Add: 1660 South Highway 100, Suite 500 St. Louis Park, MN 55416, USA.

Email: info@bioworld.com

Tel: 6123263284

Fax: 6122933841

Bioworld technology, co. Ltd.

Add: No 9, weidi road Qixia District Nanjing, 210046, P. R. China.

Email: info@biogot.com

Tel: 0086-025-68037686

Fax: 0086-025-68035151



PRODUCT DATA SHEET

Bioworld Technology, Inc.

Bioworld Technology, Inc.

Add: 1660 South Highway 100, Suite 500 St. Louis Park,
MN 55416, USA.

Email: info@bioworld.com

Tel: 6123263284

Fax: 6122933841

Bioworld technology, co. Ltd.

Add: No 9, weidi road Qixia District Nanjing, 210046,
P. R. China.

Email: info@biogot.com

Tel: 0086-025-68037686

Fax: 0086-025-68035151