

## SF2 polyclonal antibody

Catalog: BS91228

Host: Rabbit

Reactivity: Human, Mouse, Rat

### BackGround:

Pre-mRNA splicing enhancer elements are short RNA sequences capable of activating weak splice sites in nearby introns that are required for accurate splice site recognition and the control of alternative splicing. Splicing enhancer elements contain specific binding sites for serine/arginine (SR)-rich splicing factors, which include SC35, 9G8, SRp20, and SF2/ASF. The family of SR factors all contain one or more RNA recognition motifs (RRM) and an arginine/serine (RS)-rich domain. They are not only essential for constitutive splicing but also regulate splicing in a concentration-dependent manner by influencing the selection of alternative splice sites. The majority of SR proteins, including SC35 and SRp40, are confined to the nucleus, while SF2/ASF, SRp20, and 9G8 are continuously shuttled between the nucleus and the cytoplasm and contribute to mRNA transport. The activity of SR proteins in regulated splicing is antagonized by members of the hnRNP A/B family of proteins, which induce drastic shifts in the selection of splicing sites.

### Product:

Rabbit IgG, 1mg/ml in PBS with 0.02% sodium azide, 50% glycerol, pH7.2

### Molecular Weight:

### Swiss-Prot:

Q07955(Human) Q6PDM2(Mouse)

### Purification&Purity:

ProA affinity purified

### Applications:

WB:1:500-1:1,000

ICC:1:50

IHC:1:50-1:200

FC:1:50-1:100

### Storage&Stability:

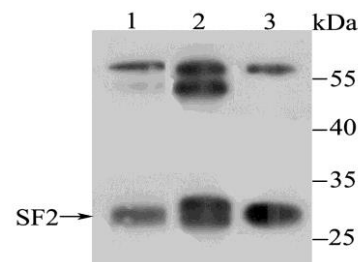
Store at +4 °C after thawing. Aliquot store at -20 °C or

-80 °C. Avoid repeated freeze / thaw cycles.

### Specificity:

SF2 polyclonal antibody detects endogenous levels of SF2 protein.

### DATA:



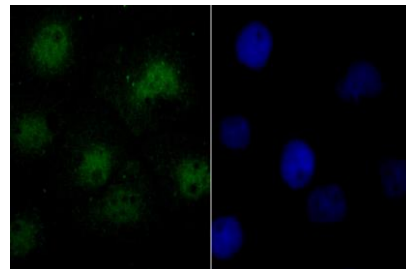
Western blot analysis of SF2 on different lysates using anti-SF2 antibody at 1/500 dilution.

Positive control:

Lane 1: Mouse heart

Lane 2: Mouse liver

Lane 3: K562



ICC staining SF2 in A431 cells (green). The nuclear counter stain is DAPI (blue). Cells were fixed in paraformaldehyde, permeabilised with 0.25% Triton X100/PBS.

### Note:

For research use only, not for use in diagnostic procedure.

### Bioworld Technology, Inc.

Add: 1660 South Highway 100, Suite 500 St. Louis Park, MN 55416, USA.

Email: [info@bioworld.com](mailto:info@bioworld.com)

Tel: 6123263284

Fax: 6122933841

### Bioworld technology, co. Ltd.

Add: No 9, weidi road Qixia District Nanjing, 210046, P. R. China.

Email: [info@biogot.com](mailto:info@biogot.com)

Tel: 0086-025-68037686

Fax: 0086-025-68035151



## PRODUCT DATA SHEET

Bioworld Technology, Inc.

---

---

### **Bioworld Technology, Inc.**

**Add:** 1660 South Highway 100, Suite 500 St. Louis Park,  
MN 55416, USA.

**Email:** [info@bioworld.com](mailto:info@bioworld.com)

**Tel:** 6123263284

**Fax:** 6122933841

### **Bioworld technology, co. Ltd.**

**Add:** No 9, weidi road Qixia District Nanjing, 210046,  
P. R. China.

**Email:** [info@biogot.com](mailto:info@biogot.com)

**Tel:** 0086-025-68037686

**Fax:** 0086-025-68035151