

## SMC1 polyclonal antibody

Catalog: BS91258

Host: Rabbit

Reactivity: Human, Mouse, Rat

### Background:

The SMC (structural maintenance of chromosomes) family of proteins form heterodimeric complexes that modulate sister chromatid cohesion and chromosome condensation for mitosis. SMC1 $\alpha$  (structural maintenance of chromosomes protein 1A), also known as SMC1, SMCB, CDLS2, SB1.8, SMC1L1 or DXS423E, is a 1,233 amino acid nuclear protein that is involved in chromosome cohesion during the cell cycle. SMC1 $\alpha$  interacts with BRCA1 and is phosphorylated by ATM, indicating a potential role in DNA repair. SMC1 $\alpha$  is a component of the cohesion complex, which is required for the cohesion of sister chromatids after DNA replication. Mutations in the gene encoding SMC1 $\alpha$  may be the cause of Cornelia de Lange syndrome (CdLS), which is a clinically heterogeneous developmental disorder characterized by facial dysmorphism, upper limb malformations, growth and cognitive retardation.

### Product:

Rabbit IgG, 1mg/ml in PBS with 0.02% sodium azide, 50% glycerol, pH7.2

### Molecular Weight:

143 kDa

### Swiss-Prot:

Q14683(Human) Q8NDV3(Human) Q920F6(Mouse)  
Q9CU62(Mouse) Q9Z1M9(Rat)

### Purification&Purity:

ProA affinity purified

### Applications:

WB:1:1,000-1:2,000

ICC:1:100-1:500

IHC:1:50-1:200

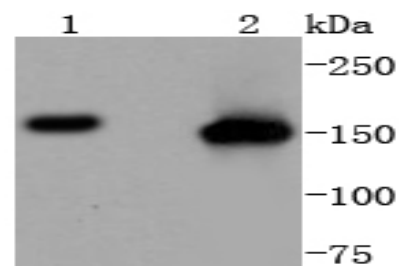
### Storage&Stability:

Store at +4 °C after thawing. Aliquot store at -20 °C or -80 °C. Avoid repeated freeze / thaw cycles.

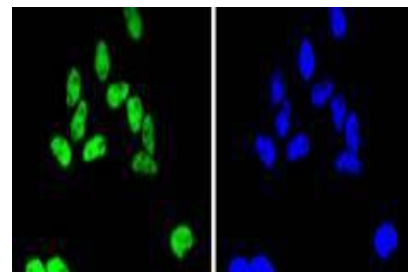
### Specificity:

SMC1 polyclonal antibody detects endogenous levels of SMC1 protein.

### DATA:



Western blot analysis of SMC1 on different lysates using anti-SMC1 antibody at 1/1,000 dilution. Positive control: Lane 1: NIH/3T3 Lane 2: HeLa



ICC staining SMC1 in HeLa cells (green). The nuclear counter stain is DAPI (blue). Cells were fixed in paraformaldehyde, permeabilised with 0.25% Triton X100/PBS.

### Note:

For research use only, not for use in diagnostic procedure.

### Bioworld Technology, Inc.

Add: 1660 South Highway 100, Suite 500 St. Louis Park, MN 55416, USA.

Email: [info@bioworld.com](mailto:info@bioworld.com)

Tel: 6123263284

Fax: 6122933841

### Bioworld technology, co. Ltd.

Add: No 9, weidi road Qixia District Nanjing, 210046, P. R. China.

Email: [info@biogot.com](mailto:info@biogot.com)

Tel: 0086-025-68037686

Fax: 0086-025-68035151