

SMYD3 polyclonal antibody

Catalog: BS91261

Host: Rabbit

Reactivity: Human, Mouse, Rat

BackGround:

Belongs to the histone-lysine methyltransferase family. Contains 1 MYND-type zinc finger. Contains 1 SET domain. Histones methyltransferase. Methylates 'Lys-4' of histone H3, inducing di- and tri-methylation, but not monomethylation. Plays an important role in transcriptional activation as a member of an RNA polymerase complex. Binds DNA containing 5'-CCCTCC- 3' or 5'-GAGGGG-3'.

Product:

Rabbit IgG, 1mg/ml in PBS with 0.02% sodium azide, 50% glycerol, pH7.2

Molecular Weight:

Swiss-Prot:

Q9H7B4(Human) Q9CWR2(Mouse)

Purification&Purity:

ProA affinity purified

Applications:

WB:1:500-1:2,000

ICC/IF:1:50-1:200

IHC:1:50-1:200

FC:1:50-1:100

Storage&Stability:

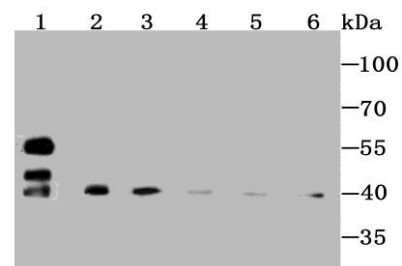
Store at +4 °C after thawing. Aliquot store at -20 °C or -80 °C. Avoid repeated freeze / thaw cycles.

Specificity:

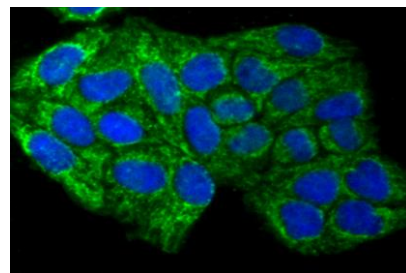
SMYD3 polyclonal antibody detects endogenous levels

of SMYD3 protein.

DATA:



Western blot analysis of SMYD3 on different cell/tissue lysate using anti-Profilin 1 antibody at 1/1,000 dilution. Positive control: Lane1: Rat kidney Lane2: PC-12 Lane3: HeLa Lane4: Mouse spleen Lane5: NIH-3T3 Lane6: Rat spleen



ICC staining SMYD3 in HeLa cells (green). The nuclear counter stain is DAPI (blue). Cells were fixed in paraformaldehyde, permeabilised with 0.25% Triton X100/PBS.

Note:

For research use only, not for use in diagnostic procedure.

Bioworld Technology, Inc.

Add: 1660 South Highway 100, Suite 500 St. Louis Park, MN 55416, USA.

Email: info@bioworld.com

Tel: 6123263284

Fax: 6122933841

Bioworld technology, co. Ltd.

Add: No 9, weidi road Qixia District Nanjing, 210046, P. R. China.

Email: info@biogot.com

Tel: 0086-025-68037686

Fax: 0086-025-68035151