

STUB1 polyclonal antibody

Catalog: BS91298

Host: Rabbit

Reactivity: Human, Mouse, Rat

BackGround:

CHIP (carboxy terminus of HSP 70-interacting protein), also designated STIP1 homology and U-box containing protein 1, HSPABP2, NY-CO-7, SDCCAG7 and STUB1, is a cytoplasmic E3 ubiquitin ligase that influences protein ubiquitylation. CHIP interacts with Smad1/Smad4 and blocks BMP signaling through the ubiquitin-mediated degradation of Smad proteins. CHIP controls both association of Hsp70/Hsp90 chaperones with ErbB2 and down-regulation of ErbB2 induced by inhibitors of Hsp90. A 1.3-kb transcript is most abundant in striated muscle (heart and skeletal muscle), with lower expression in pancreas and brain.

Product:

Rabbit IgG, 1mg/ml in PBS with 0.02% sodium azide, 50% glycerol, pH7.2

Molecular Weight:

35 kDa

Swiss-Prot:

Q9UNE7(Human) Q9WUD1(Mouse)

Purification&Purity:

ProA affinity purified

Applications:

WB:1:1,000-1:2,000

ICC:1:50-1:200

IHC:1:50-1:200

FC:1:50-1:100

IP:1:10-1:50

Storage&Stability:

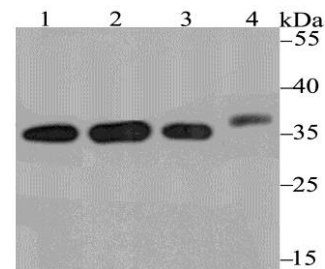
Store at +4 °C after thawing. Aliquot store at -20 °C. Avoid repeated freeze / thaw cycles.

Specificity:

STUB1 polyclonal antibody detects endogenous levels of

STUB1 protein.

DATA:



Western blot analysis of STUB1 on different lysates using anti-STUB1 antibody at 1/2,000 dilution.

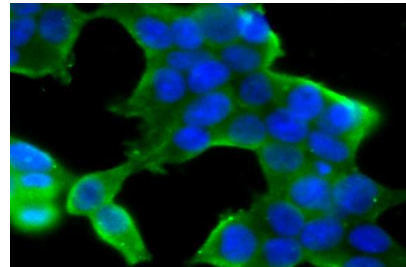
Positive control:

Lane 1: 293

Lane 2: MCF-7

Lane 3: SK-Br-3

Lane 4: Mouse kidney



ICC staining STUB1 in 293T cells (green). The nuclear counter stain is DAPI (blue). Cells were fixed in paraformaldehyde, permeabilised with 0.25% Triton X100/PBS.

Note:

For research use only, not for use in diagnostic procedure.

Bioworld Technology, Inc.

Add: 1660 South Highway 100, Suite 500 St. Louis Park, MN 55416, USA.

Email: info@bioworld.com

Tel: 6123263284

Fax: 6122933841

Bioworld technology, co. Ltd.

Add: No 9, weidi road Qixia District Nanjing, 210046, P. R. China.

Email: info@biogot.com

Tel: 0086-025-68037686

Fax: 0086-025-68035151