

## SUFU polyclonal antibody

Catalog: BS91299

Host: Rabbit

Reactivity: Human

### BackGround:

Su(fu) (for Suppressor-of-Fused) is a key negative regulator in the vertebrate Hedgehog signaling pathway. Su(fu) interacts with genes encoding proteins in this signal transduction pathway. In *Drosophila*, Intracellular transduction of the Hedgehog pathway involves the release of a large complex containing Su(fu). Su(fu) inhibits the activity of the transcription factor Gli1 and interacts with Gli2, Gli3 and the serine/threonine kinase Fused. Su(fu) is widely expressed in adult and embryonic tissues with higher expression in tissues patterned by hedgehog signaling. The Su(fu) gene locus maps to a region that is deleted in glioblastomas, prostate cancer, malignant melanoma and endometrial cancer.

### Product:

Rabbit IgG, 1mg/ml in PBS with 0.02% sodium azide, 50% glycerol, pH7.2

### Molecular Weight:

54 kDa

### Swiss-Prot:

Q9UMX1(Human)

### Purification&Purity:

Protein affinity purified.

### Applications:

WB:1:500-1:1,000

ICC:1:50-1:200

IHC:1:50-1:200

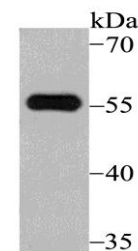
### Storage&Stability:

Store at +4 °C after thawing. Aliquot store at -20 °C. Avoid repeated freeze / thaw cycles.

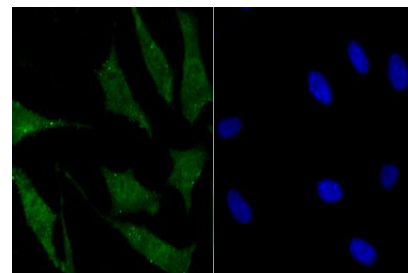
### Specificity:

SUFU polyclonal antibody detects endogenous levels of SUFU protein.

### DATA:



Western blot analysis of SUFU on 293 cell lysate using anti-SUFU antibody at 1/500 dilution.



ICC staining SUFU in SH-SY-5Y cells (green). The nuclear counter stain is DAPI (blue). Cells were fixed in paraformaldehyde, permeabilised with 0.25% Triton X100/PBS.

### Note:

For research use only, not for use in diagnostic procedure.

### Bioworld Technology, Inc.

Add: 1660 South Highway 100, Suite 500 St. Louis Park, MN 55416, USA.

Email: [info@bioworld.com](mailto:info@bioworld.com)

Tel: 6123263284

Fax: 6122933841

### Bioworld technology, co. Ltd.

Add: No 9, weidi road Qixia District Nanjing, 210046, P. R. China.

Email: [info@biogot.com](mailto:info@biogot.com)

Tel: 0086-025-68037686

Fax: 0086-025-68035151