

SUMO4 polyclonal antibody

Catalog: BS91302

Host: Rabbit

Reactivity: Human, Mouse, Rat

BackGround:

The small ubiquitin-related modifier (SUMO) proteins, which include SUMO-1, SUMO-2, SUMO-3 and SUMO-4, belong to the ubiquitin-like protein family. Like ubiquitin, the SUMO proteins are synthesized as precursor proteins that undergo processing before conjugation to target proteins. Ubiquitin and SUMO proteins utilize the E1, E2 and E3 cascade enzymes for conjugation. However, SUMO and ubiquitin differ with respect to targeting. Ubiquitination predominantly targets proteins for degradation, whereas sumoylation targets proteins for a variety of cellular processing, including nuclear transport, transcriptional regulation, apoptosis and protein stability. The unconjugated SUMO-1, SUMO-2, SUMO-3 and SUMO-4 proteins localize to the nucleus. In contrast to the other SUMO proteins, SUMO-4 seems to be insensitive to sentrin-specific proteases due to the presence of Pro-90, which may impair processing to mature form and conjugation to substrates. It is suggested that defects in the gene that encodes for the SUMO-4 protein may be involved in the pathogenesis of type I diabetes.

Product:

Rabbit IgG, 1mg/ml in PBS with 0.02% sodium azide, 50% glycerol, pH7.2

Molecular Weight:

11 kDa

Swiss-Prot:

Q6EEV6(Human) P61957(Mouse) P61959(Rat)

Purification&Purity:

ProA affinity purified

Applications:

WB:1:1,000-1:2,000

FC:1:50-1:100

ICC:1:100-1:500

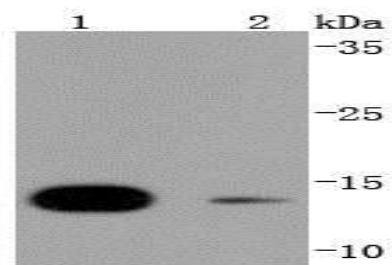
Storage&Stability:

Store at +4 °C after thawing. Aliquot store at -20 °C or -80 °C. Avoid repeated freeze / thaw cycles.

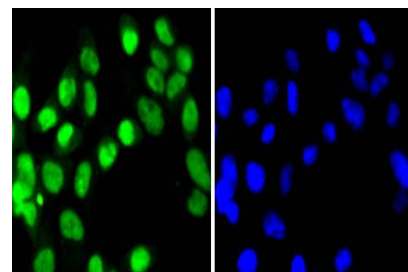
Specificity:

SUMO4 polyclonal antibody detects endogenous levels of SUMO4 protein.

DATA:



Western blot analysis of SUMO4 on different lysates using anti-SUMO4 antibody at 1/1,000 dilution. Positive control: Lane 1: 293T Lane 2: Jurkat



ICC staining SUMO4 in 293 cells (green). The nuclear counter stain is DAPI (blue). Cells were fixed in paraformaldehyde, permeabilised with 0.25% Triton X100/PBS.

Note:

For research use only, not for use in diagnostic procedure.

Bioworld Technology, Inc.

Add: 1660 South Highway 100, Suite 500 St. Louis Park, MN 55416, USA.

Email: info@bioworld.com

Tel: 6123263284

Fax: 6122933841

Bioworld technology, co. Ltd.

Add: No 9, weidi road Qixia District Nanjing, 210046, P. R. China.

Email: info@biogot.com

Tel: 0086-025-68037686

Fax: 0086-025-68035151