

SUZ12 polyclonal antibody

Catalog: BS91306

Host: Rabbit

Reactivity: Human, Mouse, Rat

BackGround:

The Polycomb group (PcG) genes contribute to the maintenance of cell identity, cell cycle regulation and oncogenesis. The mammalian PcG proteins are regulatory proteins important for Hox gene expression, axial skeleton development and the control of proliferation and survival of hematopoietic cells. By inducing changes in chromatin structure, the PcG proteins are part of a cellular memory system that is responsible for gene activity being inherited to progeny cells. PcG proteins silence gene expression through the formation of multimeric protein complexes with different compositions. Manipulating the expression-levels of various PcG proteins in mammalian cell lines results in cellular transformation, which may be a link between the chromatin-associated PcG proteins and cancer. Polycomb protein SUZ12, also designated ChET 9 protein or joined-to-JAZF1 protein, is a nuclear protein belonging to the VEFS (VRN2-EMF2-FIS2-SUZ12) family. SUZ12 has been detected at the breakpoints of a certain recurrent chromosomal translocation which has been reported in endometrial stromal sarcoma. It is a component of the PRC2 complex, composed of EED, EZH2, SUZ12/JAZ1, RBBP4 and RBBP7.

Product:

Rabbit IgG, 1mg/ml in PBS with 0.02% sodium azide, 50% glycerol, pH7.2

Molecular Weight:

83 kDa

Swiss-Prot:

Q15022(Human) Q80U70(Mouse) EntrezGene:688041(Rat)

Purification&Purity:

ProA affinity purified

Applications:

WB:1:1,000-1:2,000

ICC:1:50-1:200

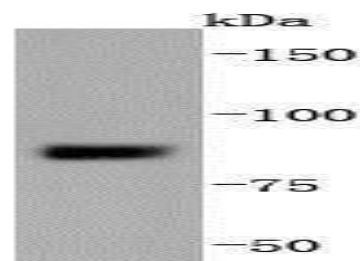
Storage&Stability:

Store at +4 °C after thawing. Aliquot store at -20 °C or -80 °C. Avoid repeated freeze / thaw cycles.

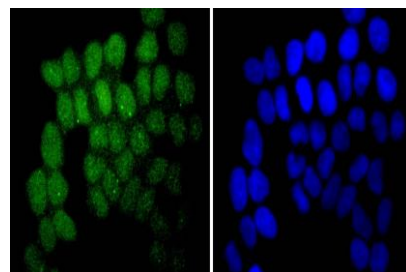
Specificity:

SUZ12 polyclonal antibody detects endogenous levels of SUZ12 protein.

DATA:



Western blot analysis of SUZ12 on MCF-7 cells lysates using anti-SUZ12 antibody at 1/1,000 dilution.



ICC staining SUZ12 in HeLa cells (green). The nuclear counter stain is DAPI (blue). Cells were fixed in paraformaldehyde, permeabilised with 0.25% Triton X100/PBS.

Note:

For research use only, not for use in diagnostic procedure.

Bioworld Technology, Inc.

Add: 1660 South Highway 100, Suite 500 St. Louis Park, MN 55416, USA.

Email: info@bioworld.com

Tel: 6123263284

Fax: 6122933841

Bioworld technology, co. Ltd.

Add: No 9, weidi road Qixia District Nanjing, 210046, P. R. China.

Email: info@biogot.com

Tel: 0086-025-68037686

Fax: 0086-025-68035151