

Syndecan 1 polyclonal antibody

Catalog: BS91308

Host: Rabbit

Reactivity: Human, Mouse, Rat

BackGround:

Syndecan-1 (SYND1), also designated CD138, is a type I integral membrane proteoglycan that contains both chondroitin sulfate and heparan sulfate groups. It is expressed in mouse on pre-B cells, immature B cells and plasma cells. Syndecan-1 is also found on the basolateral surfaces of epithelial cells, endothelial cells of sprouting capillaries and embryonic condensing mesenchymal cells. Syndecan-1 functions as an extracellular matrix receptor which binds to collagens, Fibronectin and Thrombospondin. It has been shown to co-localize with Actin-rich filaments and may act to link the cytoskeleton to the extracellular matrix.

Product:

Rabbit IgG, 1mg/ml in PBS with 0.02% sodium azide, 50% glycerol, pH7.2

Molecular Weight:

35 kDa

Swiss-Prot:

P18827(Human) P18828(Mouse) P26260(Rat)

Purification&Purity:

ProA affinity purified

Applications:

WB:1:500-1:1,000

ICC:1:100-1:500

IHC:1:50-1:200

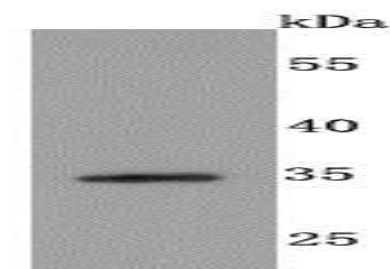
Storage&Stability:

Store at +4 °C after thawing. Aliquot store at -20 °C or -80 °C. Avoid repeated freeze / thaw cycles.

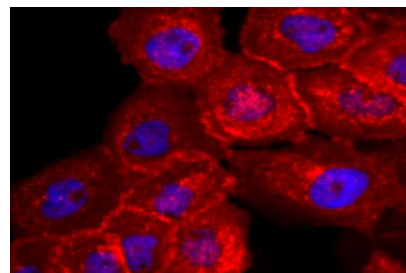
Specificity:

Syndecan 1 polyclonal antibody detects endogenous levels of Syndecan 1 protein.

DATA:



Western blot analysis of Syndecan 1 on NIH-3T3 cells lysates using anti-Syndecan 1 antibody at 1/500 dilution.



ICC staining Syndecan 1 in A431 cells (red). The nuclear counter stain is DAPI (blue). Cells were fixed in paraformaldehyde, permeabilised with 0.25% Triton X100/PBS.

Note:

For research use only, not for use in diagnostic procedure.

Bioworld Technology, Inc.

Add: 1660 South Highway 100, Suite 500 St. Louis Park, MN 55416, USA.

Email: info@bioworld.com

Tel: 6123263284

Fax: 6122933841

Bioworld technology, co. Ltd.

Add: No 9, weidi road Qixia District Nanjing, 210046, P. R. China.

Email: info@biogot.com

Tel: 0086-025-68037686

Fax: 0086-025-68035151