

Syntrophin α 1 polyclonal antibody

Catalog: BS91311

Host: Rabbit

Reactivity: Human, Mouse

Background:

The syntrophins are PDZ-domain-containing proteins that facilitate the recruitment of signaling proteins such as NOS1 to the dystrophin-associated protein complex. The syntrophin family are structurally related proteins that contain multiple protein interaction motifs. Syntrophins associate directly with dystrophin, the product of the Duchenne muscular dystrophy locus, and its homologs. α -Syntrophin has an important role in synapse formation and in the organization of utrophin, acetylcholine receptor and acetylcholinesterase at the neuromuscular synapse. Specifically, NOS1 binds to α -Syntrophin at muscle sarcolemma. β 2-Syntrophin is a modular adapter. In muscle cells, β 2-Syntrophin interacts with members of the dystrophin family, which includes utrophin.

Product:

Rabbit IgG, 1mg/ml in PBS with 0.02% sodium azide, 50% glycerol, pH7.2

Molecular Weight:

54 kDa

Swiss-Prot:

Q13424(Human)

Purification&Purity:

ProA affinity purified

Applications:

WB:1:500

ICC:1:50-1:200

IHC:1:50-1:200

FC:1:50-1:200

Storage&Stability:

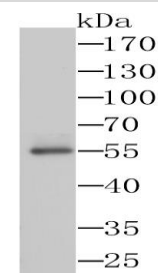
Store at +4 °C after thawing. Aliquot store at -20 °C. Avoid

repeated freeze / thaw cycles.

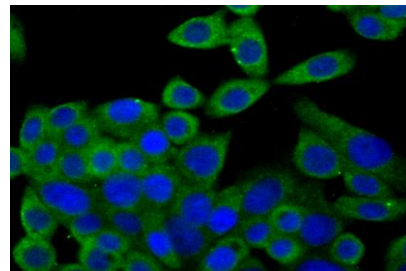
Specificity:

Syntrophin α 1 polyclonal antibody detects endogenous levels of Syntrophin α 1 protein.

DATA:



Western blot analysis of Syntrophin alpha 1 on SiHa cells lysates using anti-Syntrophin alpha 1 antibody at 1/1,000 dilution.



ICC staining Syntrophin alpha 1 in LOVO cells (green). The nuclear counter stain is DAPI (blue). Cells were fixed in paraformaldehyde, permeabilised with 0.25% Triton X100/PBS.

Note:

For research use only, not for use in diagnostic procedure.

Bioworld Technology, Inc.

Add: 1660 South Highway 100, Suite 500 St. Louis Park, MN 55416, USA.

Email: info@bioworld.com

Tel: 6123263284

Fax: 6122933841

Bioworld technology, co. Ltd.

Add: No 9, weidi road Qixia District Nanjing, 210046, P. R. China.

Email: info@biogot.com

Tel: 0086-025-68037686

Fax: 0086-025-68035151