

## TGM6 polyclonal antibody

Catalog: BS91339

Host: Rabbit

Reactivity: Human, Mouse, Rat

### BackGround:

Transglutaminase 6 is a protein that in humans is encoded by the TGM6 gene. The protein encoded by this gene belongs to the transglutaminase superfamily. It catalyzes the cross-linking of proteins and the conjugation of polyamines to proteins. Mutations in this gene are associated with spinocerebellar ataxia type 35 (SCA35). Alternatively spliced transcript variants encoding different isoforms have been found for this gene.

### Product:

Rabbit IgG, 1mg/ml in PBS with 0.02% sodium azide, 50% glycerol, pH7.2

### Molecular Weight:

79/71 kDa

### Swiss-Prot:

O95932(Human) Q6Y684(Mouse) F1M4T7(Rat)

### Purification&Purity:

Peptide affinity purified

### Applications:

WB:1:500

ICC:1:50-1:200

IHC:1:50-1:200

FC:1:50-1:100

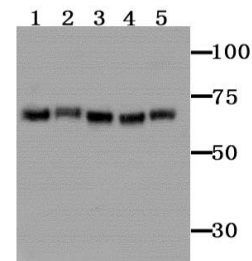
### Storage&Stability:

Store at +4 °C after thawing. Aliquot store at -20 °C or -80 °C. Avoid repeated freeze / thaw cycles.

### Specificity:

TGM6 polyclonal antibody detects endogenous levels of TGM6 protein.

### DATA:



Western blot analysis of TGM6 on different tissue lysates using anti-TGM6 antibody at 1/100 dilution.

Positive control:

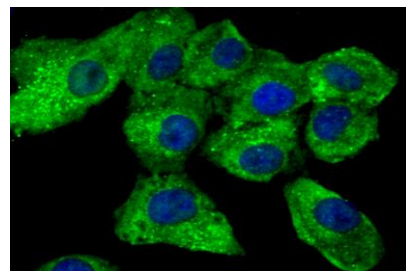
Lane 1 : Mouse brain

Lane 2 : Mouse brain

Lane 3 : Mouse spleen

Lane 4 : Mouse spleen

Lane 5 : Mouse testis



ICC staining TGM6 in A549 cells (green). The nuclear counter stain is DAPI (blue). Cells were fixed in paraformaldehyde, permeabilised with 0.25% Triton X100/PBS.

### Note:

For research use only, not for use in diagnostic procedure.

### Bioworld Technology, Inc.

Add: 1660 South Highway 100, Suite 500 St. Louis Park, MN 55416, USA.

Email: [info@bioworld.com](mailto:info@bioworld.com)

Tel: 6123263284

Fax: 6122933841

### Bioworld technology, co. Ltd.

Add: No 9, weidi road Qixia District Nanjing, 210046, P. R. China.

Email: [info@biogot.com](mailto:info@biogot.com)

Tel: 0086-025-68037686

Fax: 0086-025-68035151