

TOP2A polyclonal antibody

Catalog: BS91367

Host: Rabbit

Reactivity: Human, mouse, rat

BackGround:

This gene encodes a DNA topoisomerase, an enzyme that controls and alters the topologic states of DNA during transcription. This nuclear enzyme is involved in processes such as chromosome condensation, chromatid separation, and the relief of torsional stress that occurs during DNA transcription and replication. It catalyzes the transient breaking and rejoining of two strands of duplex DNA which allows the strands to pass through one another, thus altering the topology of DNA. Two forms of this enzyme exist as likely products of a gene duplication event. It is essential during mitosis and meiosis for proper segregation of daughter chromosomes.

Product:

Rabbit IgG, 1mg/ml in PBS with 0.02% sodium azide, 50% glycerol, pH7.2

Molecular Weight:

174 kDa

Swiss-Prot:

P11388

Purification&Purity:

Peptide affinity purified

Applications:

WB:1:500

ICC:1:200

IHC:1:200

FC:1:100-1:200

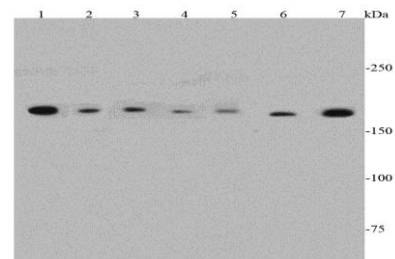
Storage&Stability:

Store at +4 °C after thawing. Aliquot store at -20 °C or -80 °C. Avoid repeated freeze / thaw cycles.

Specificity:

TOP2A polyclonal antibody detects endogenous levels of TOP2A protein.

DATA:



Western blot analysis of TOP2A on different cell lysates using anti-TOP2A antibody at 1/500 dilution. Positive control:

Lane 1: Jurkat

Lane 2: NIH/3T3

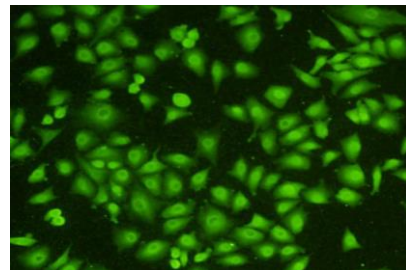
Lane 3: A431

Lane 4: L929

Lane 5: A549

Lane 6: Human liver

Lane 7: HUVEC



ICC staining TOP2A in A549 cells (green). Cells were fixed in para-formaldehyde, permeabilised with 0.25% Triton X100/PBS.

Note:

For research use only, not for use in diagnostic procedure.

Bioworld Technology, Inc.

Add: 1660 South Highway 100, Suite 500 St. Louis Park, MN 55416, USA.

Email: info@bioworld.com

Tel: 6123263284

Fax: 6122933841

Bioworld technology, co. Ltd.

Add: No 9, weidi road Qixia District Nanjing, 210046, P. R. China.

Email: info@biogot.com

Tel: 0086-025-68037686

Fax: 0086-025-68035151