

## Tubuliny polyclonal antibody

Catalog: BS91386	Host: Rabbit	Reactivity: Human, Mouse, Rat, Monkey, Chicken, Hamster, Cow, Dog, Fish, Xenopus tropicalis
------------------	--------------	---

### BackGround:

Tubulin is a major cytoskeleton component that has five distinct forms, designated  $\alpha$ ,  $\beta$ ,  $\gamma$ ,  $\delta$  and  $\epsilon$  Tubulin.  $\alpha$  and  $\beta$  Tubulins form heterodimers which multimerize to form a microtubule filament. Multiple  $\beta$  Tubulin isoforms ( $\beta 1$ ,  $\beta 2$ ,  $\beta 3$ ,  $\beta 4$ ,  $\beta 5$ ,  $\beta 6$  and  $\beta 8$ ) have been characterized and are expressed in mammalian tissues.  $\beta 1$  and  $\beta 4$  are present throughout the cytosol,  $\beta 2$  is present in the nuclei and nucleoplasm, and  $\beta 3$  is a neuron-specific cytoskeletal protein.  $\gamma$  Tubulin forms the gammaosome, which is required for nucleating microtubule filaments at the centrosome. Both  $\delta$  Tubulin and  $\epsilon$  Tubulin are associated with the centrosome.  $\delta$  Tubulin is a homolog of the Chlamydomonas  $\delta$  Tubulin Uni3 and is found in association with the centrioles, whereas  $\epsilon$  Tubulin localizes to the pericentriolar material.  $\epsilon$  Tubulin exhibits a cell-cycle-specific pattern of localization, first associating with only the older of the centrosomes in a newly duplicated pair and later associating with both centrosomes.

### Product:

Rabbit IgG, 1mg/ml in PBS with 0.02% sodium azide, 50% glycerol, pH7.2

### Molecular Weight:

51 kDa

### Swiss-Prot:

P23258(Human) Q9NRH3(Human) P83887(Mouse)  
Q8VCK3(Mouse) P83888(Rat) P23330(Xenopus laevis)

### Purification&Purity:

ProA affinity purified

### Applications:

WB:1:1,000-1:2,000

ICC:1:50-1:200

IHC:1:50-1:200

FC:1:50-1:100

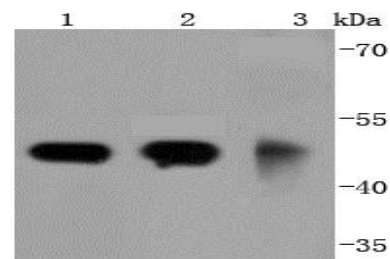
### Storage&Stability:

Store at +4 °C after thawing. Aliquot store at -20 °C or -80 °C. Avoid repeated freeze / thaw cycles.

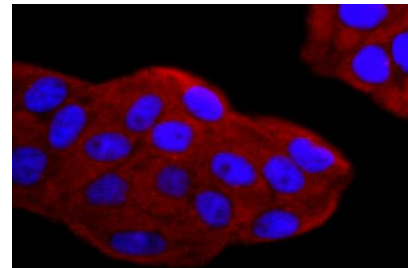
### Specificity:

Tubuliny polyclonal antibody detects endogenous levels of Tubuliny protein.

### DATA:



Western blot analysis of gamma Tubulin on different lysates using anti-gamma Tubulin antibody at 1/1,000 dilution. Positive control: Lane 1: A431 Lane 2: Jurkat Lane 3: Mouse brain



ICC staining gamma Tubulin in HeLa cells (red). The nuclear counter stain is DAPI (blue). Cells were fixed in paraformaldehyde, permeabilised with 0.25% Triton X100/PBS.

### Note:

For research use only, not for use in diagnostic procedure.

### Bioworld Technology, Inc.

Add: 1660 South Highway 100, Suite 500 St. Louis Park, MN 55416, USA.

Email: [info@bioworld.com](mailto:info@bioworld.com)

Tel: 6123263284

Fax: 6122933841

### Bioworld technology, co. Ltd.

Add: No 9, weidi road Qixia District Nanjing, 210046, P. R. China.

Email: [info@biogot.com](mailto:info@biogot.com)

Tel: 0086-025-68037686

Fax: 0086-025-68035151



## PRODUCT DATA SHEET

Bioworld Technology, Inc.

---

---

### **Bioworld Technology, Inc.**

**Add:** 1660 South Highway 100, Suite 500 St. Louis Park,  
MN 55416, USA.

**Email:** [info@bioworld.com](mailto:info@bioworld.com)

**Tel:** 6123263284

**Fax:** 6122933841

### **Bioworld technology, co. Ltd.**

**Add:** No 9, weidi road Qixia District Nanjing, 210046,  
P. R. China.

**Email:** [info@biogot.com](mailto:info@biogot.com)

**Tel:** 0086-025-68037686

**Fax:** 0086-025-68035151