

UBA1 polyclonal antibody

Catalog: BS91397

Host: Rabbit

Reactivity: Human, Mouse, Rat

BackGround:

The ubiquitin activating enzyme E1 (UBE1) catalyzes the first step in ubiquitin conjugation to mark cellular proteins for degradation. Specifically, UBE1 functions to adenylate the C-terminal glycine residue of ubiquitin, a reaction that is ATP-dependent and is preceded by the formation of a thiolester bond with a cysteine residue of UBE1. The UBE1-activated ubiquitin is then transferred to a ubiquitin conjugated enzyme, which donates the ubiquitin residue to target substrates. The UBE1 gene is an example of an X-Y homologous gene, which is X-linked with a distinct Y-linked gene in many mammals. However, no UBE1 homolog is detectable on the human Y chromosome. UBE1 is thought to escape X inactivation in humans.

Product:

Rabbit IgG, 1mg/ml in PBS with 0.02% sodium azide, 50% glycerol, pH7.2

Molecular Weight:

118 kDa

Swiss-Prot:

P22314(Human) Q02053(Mouse) Q5U300(Rat)

Purification&Purity:

ProA affinity purified

Applications:

WB:1:1,000-1:2,000

ICC:1:50-1:200

IHC:1:100-1:500

FC:1:50-1:100

Storage&Stability:

Store at +4 °C after thawing. Aliquot store at -20 °C or

-80 °C. Avoid repeated freeze / thaw cycles.

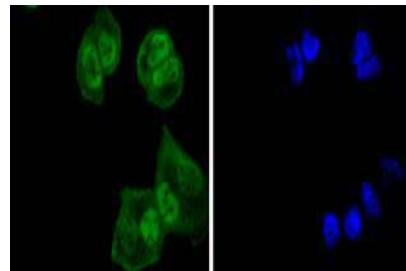
Specificity:

UBA1 polyclonal antibody detects endogenous levels of UBA1 protein.

DATA:



Western blot analysis of UBA1 on mouse liver lysates using anti-UBA1 antibody at 1/5,000 dilution.



ICC staining UBA1 in HeLa cells (green). The nuclear counter stain is DAPI (blue). Cells were fixed in paraformaldehyde, permeabilised with 0.25% Triton X100/PBS.

Note:

For research use only, not for use in diagnostic procedure.

Bioworld Technology, Inc.

Add: 1660 South Highway 100, Suite 500 St. Louis Park, MN 55416, USA.

Email: info@bioworld.com

Tel: 6123263284

Fax: 6122933841

Bioworld technology, co. Ltd.

Add: No 9, weidi road Qixia District Nanjing, 210046, P. R. China.

Email: info@biogot.com

Tel: 0086-025-68037686

Fax: 0086-025-68035151