

UQCRFS1 polyclonal antibody

Catalog: BS91406

Host: Rabbit

Reactivity: Human, Mouse, Rat

BackGround:

Cytochrome b-c1 complex subunit Rieske, mitochondrial: Component of the mitochondrial ubiquinol-cytochrome c reductase complex dimer (complex III dimer), which is a respiratory chain that generates an electrochemical potential coupled to ATP synthesis. Incorporation of UQCRFS1 is the penultimate step in complex III assembly.

Product:

Rabbit IgG, 1mg/ml in PBS with 0.02% sodium azide, 50% glycerol, pH7.2

Molecular Weight:

21 kDa

Swiss-Prot:

P47985(Human) Q9CR68(Mouse) P20788(Rat)

Purification&Purity:

ProA affinity purified

Applications:

WB:1:500-1:2,000

ICC:1:500-1:2,000

IHC:1:50-1:200

FC:1:50-1:100

FC:1:10-1:50

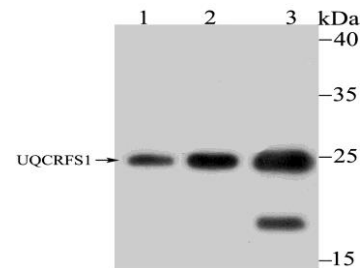
Storage&Stability:

Store at +4 °C after thawing. Aliquot store at -20 °C. Avoid repeated freeze / thaw cycles.

Specificity:

UQCRFS1 polyclonal antibody detects endogenous levels of UQCRFS1 protein.

DATA:



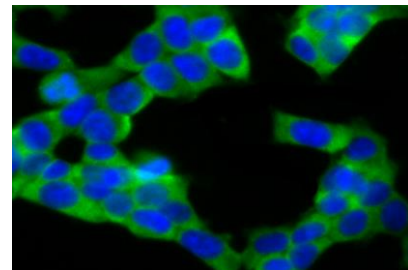
Western blot analysis of UQCRFS1 on different lysates using anti-UQCRFS1 antibody at 1/1,000 dilution.

Positive control:

Lane 1: A549

Lane 2: 293

Lane 3: Mouse kidney



ICC staining UQCRFS1 in 293T cells (green). The nuclear counter stain is DAPI (blue). Cells were fixed in paraformaldehyde, permeabilised with 0.25% Triton X100/PBS.

Note:

For research use only, not for use in diagnostic procedure.

Bioworld Technology, Inc.

Add: 1660 South Highway 100, Suite 500 St. Louis Park, MN 55416, USA.

Email: info@bioworld.com

Tel: 6123263284

Fax: 6122933841

Bioworld technology, co. Ltd.

Add: No 9, weidi road Qixia District Nanjing, 210046, P. R. China.

Email: info@biogot.com

Tel: 0086-025-68037686

Fax: 0086-025-68035151