

USP36 polyclonal antibody

Catalog: BS91417

Host: Rabbit

Reactivity: Human

BackGround:

Ubiquitin-specific protease 36 is an enzyme that in humans is encoded by the USP36 gene. This gene encodes a member of the ubiquitin-specific protease family of proteases that is a deubiquitinating enzyme (DUB) with His and Cys domains. This protein is located in the nucleoli and deubiquitinate nucleophosmin and fibrillarin. May be required for maintaining multiple types of adult stem cells. May function as a transcriptional repressor by continually deubiquitinating histone H2B at the promoters of genes critical for cellular differentiation, thereby preventing histone H3 'Lys-4' trimethylation (H3K4).

Product:

Rabbit IgG, 1mg/ml in PBS with 0.02% sodium azide, 50% glycerol, pH7.2

Molecular Weight:

123 kDa

Swiss-Prot:

Q9P275(Human)

Purification&Purity:

Peptide affinity purified

Applications:

ICC:1:50-1:200

IHC:1:50-1:200

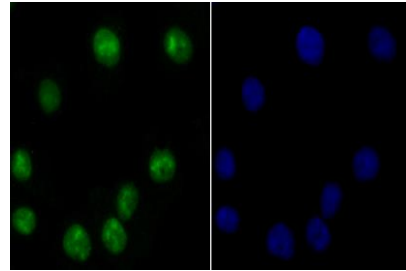
Storage&Stability:

Store at +4 °C after thawing. Aliquot store at -20 °C or -80 °C. Avoid repeated freeze / thaw cycles.

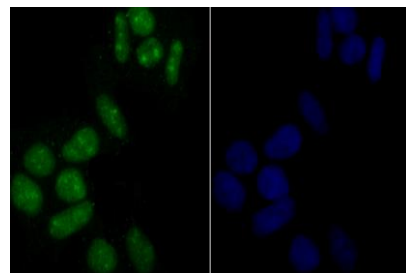
Specificity:

USP36 polyclonal antibody detects endogenous levels of USP36 protein.

DATA:



ICC staining USP36 in A549 cells (green). The nuclear counter stain is DAPI (blue). Cells were fixed in paraformaldehyde, permeabilised with 0.25% Triton X100/PBS.



ICC staining USP36 in HeLa cells (green). The nuclear counter stain is DAPI (blue). Cells were fixed in paraformaldehyde, permeabilised with 0.25% Triton X100/PBS.

Note:

For research use only, not for use in diagnostic procedure.

Bioworld Technology, Inc.

Add: 1660 South Highway 100, Suite 500 St. Louis Park, MN 55416, USA.

Email: info@bioworld.com

Tel: 6123263284

Fax: 6122933841

Bioworld technology, co. Ltd.

Add: No 9, weidi road Qixia District Nanjing, 210046, P. R. China.

Email: info@biogot.com

Tel: 0086-025-68037686

Fax: 0086-025-68035151