

VAMP1 polyclonal antibody

Catalog: BS91420

Host: Rabbit

Reactivity: Human, Mouse, Rat

BackGround:

Synaptobrevins/VAMPs, syntaxins, and the 25-kD synaptosomal-associated protein SNAP25 are the main components of a protein complex involved in the docking and/or fusion of synaptic vesicles with the presynaptic membrane. VAMP1 is a member of the vesicle-associated membrane protein (VAMP)/synaptobrevin family. Multiple alternative splice variants that encode proteins with alternative carboxy ends have been described, but the full-length nature of some variants has not been defined.

Product:

Rabbit IgG, 1mg/ml in PBS with 0.02% sodium azide, 50% glycerol, pH7.2

Molecular Weight:

13 kDa

Swiss-Prot:

P23763(Human) Q62442(Mouse) Q63666(Rat)

Purification&Purity:

ProA affinity purified

Applications:

WB:1:500-1:2,000

ICC/IF:1:50-1:200

IHC:1:50-1:200

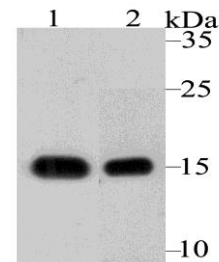
Storage&Stability:

Store at +4 °C after thawing. Aliquot store at -20 °C. Avoid repeated freeze / thaw cycles.

Specificity:

VAMP1 polyclonal antibody detects endogenous levels of VAMP1 protein.

DATA:

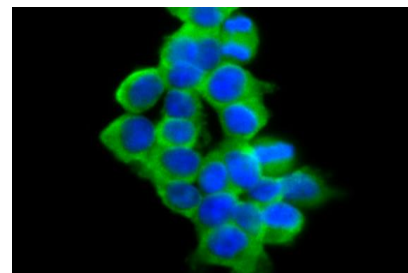


Western blot analysis of VAMP1 on different tissue lysates using anti-VAMP1 antibody at 1/2,000 dilution.

Positive control:

Lane 1: Mouse cerebellum

Lane 2: Rat brain



ICC staining VAMP1 in 293T cells (green). The nuclear counter stain is DAPI (blue). Cells were fixed in paraformaldehyde, permeabilised with 0.25% Triton X100/PBS.

Note:

For research use only, not for use in diagnostic procedure.

Bioworld Technology, Inc.

Add: 1660 South Highway 100, Suite 500 St. Louis Park, MN 55416, USA.

Email: info@bioworld.com

Tel: 6123263284

Fax: 6122933841

Bioworld technology, co. Ltd.

Add: No 9, weidi road Qixia District Nanjing, 210046, P. R. China.

Email: info@biogot.com

Tel: 0086-025-68037686

Fax: 0086-025-68035151