

## VEGF polyclonal antibody

Catalog: BS91432

Host: Rabbit

Reactivity: Human

### BackGround:

Vascular endothelial growth factor A (VEGFA) is a dimeric glycoprotein that plays a significant role in neurons and is considered to be the main, dominant inducer to the growth of blood vessels. VEGFA is essential for adults during organ remodeling and diseases that involve blood vessels, for example, in wound healing, tumor angiogenesis, diabetic retinopathy, and age-related muscular degeneration.

### Product:

Rabbit IgG, 1mg/ml in PBS with 0.02% sodium azide, 50% glycerol, pH7.2

### Molecular Weight:

27 kDa

### Swiss-Prot:

P15692

### Purification&Purity:

Peptide affinity purified

### Applications:

WB:1:500-1:1,000

ICC:1:200

IHC:1:200

FC:1:100-1:200

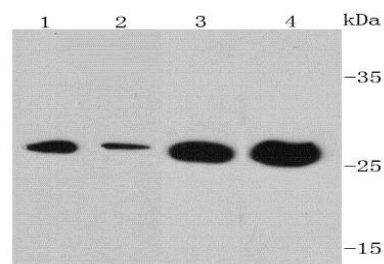
### Storage&Stability:

Store at +4 °C after thawing. Aliquot store at -20 °C or -80 °C. Avoid repeated freeze / thaw cycles.

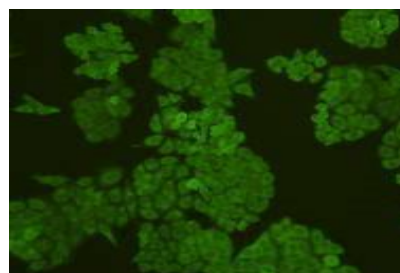
### Specificity:

VEGF polyclonal antibody detects endogenous levels of VEGF protein.

### DATA:



Western blot analysis of VEGF on different cell lysates using anti-VEGF antibody at 1/500 dilution. Positive control: Lane 1: Jurkat Lane 2: Hela Lane 3: MCF-7 Lane 4: Human brain



ICC staining VEGF in HepG2 cells (green). Cells were fixed in para-formaldehyde, permeabilised with 0.25% Triton X100/PBS.

### Note:

For research use only, not for use in diagnostic procedure.

### Bioworld Technology, Inc.

Add: 1660 South Highway 100, Suite 500 St. Louis Park, MN 55416, USA.

Email: [info@bioworld.com](mailto:info@bioworld.com)

Tel: 6123263284

Fax: 6122933841

### Bioworld technology, co. Ltd.

Add: No 9, weidi road Qixia District Nanjing, 210046, P. R. China.

Email: [info@biogot.com](mailto:info@biogot.com)

Tel: 0086-025-68037686

Fax: 0086-025-68035151