

## Vinculin polyclonal antibody

Catalog: BS91441

Host: Rabbit

Reactivity: Human, Mouse, Rat

### BackGround:

Focal adhesions are identified as areas within the plasma membrane of tissue culture cells that adhere tightly to the underlying substrate. In vivo, these regions are involved in the adhesion of cells to the extracellular matrix. Paxillin and vinculin are cytoskeletal, focal adhesion proteins that are components of a protein complex which links the Actin network to the plasma membrane. Vinculin binding sites have been identified on other cytoskeletal proteins, including Talin and  $\alpha$ -actinin. In addition, vinculin, Talin and  $\alpha$ -actinin each contain Actin binding sites. Expression of vinculin and Talin have been shown to be affected by the level of Actin expression.  $\alpha$ -Actinin has been shown to link Actin to integrins in the plasma membrane through interactions with the vinculin and Talin complex or by a direct interaction with integrin.

### Product:

Rabbit IgG, 1mg/ml in PBS with 0.02% sodium azide, 50% glycerol, pH7.2

### Molecular Weight:

124 kDa

### Swiss-Prot:

P18206(Human) Q64727(Mouse) P85972(Rat)

### Purification&Purity:

ProA affinity purified

### Applications:

WB:1:500-1:2,000

ICC/IF:1:50-1:200

IP:1:10-1:50

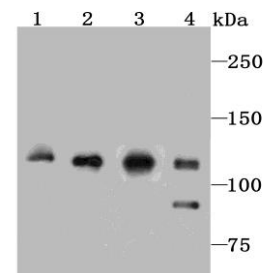
### Storage&Stability:

Store at +4 °C after thawing. Aliquot store at -20 °C or -80 °C. Avoid repeated freeze / thaw cycles.

### Specificity:

Vinculin polyclonal antibody detects endogenous levels of Vinculin protein.

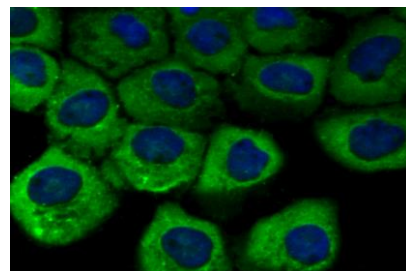
### DATA:



Western blot analysis of Vinculin on different lysates using anti-Vinculin antibody at 1/1,000 dilution. Positive control: Lane 1: HepG2 Lane2:

Human fetal skeletal muscle Lane 3: Rat spleen

Lane 4: Mouse kidney



ICC staining Vinculin in A431 cells (green). The nuclear counter stain is DAPI (blue). Cells were fixed in paraformaldehyde, permeabilised with 0.25% Triton X100/PBS.

### Note:

For research use only, not for use in diagnostic procedure.

### Bioworld Technology, Inc.

Add: 1660 South Highway 100, Suite 500 St. Louis Park, MN 55416, USA.

Email: [info@bioworld.com](mailto:info@bioworld.com)

Tel: 6123263284

Fax: 6122933841

### Bioworld technology, co. Ltd.

Add: No 9, weidi road Qixia District Nanjing, 210046, P. R. China.

Email: [info@biogot.com](mailto:info@biogot.com)

Tel: 0086-025-68037686

Fax: 0086-025-68035151