

WASF2 polyclonal antibody

Catalog: BS91447

Host: Rabbit

Reactivity: Human, Mouse, Rat

BackGround:

WASP (for Wiskott-Aldrich syndrome protein) and N-WASP are downstream effectors of Cdc42 that are implicated in Actin polymerization and cytoskeletal organization. The WASP family also includes VASP (vasodilator-stimulated phosphoprotein) and Mena (for mammalian enabled protein), which accumulate at focal adhesions and are also involved in the regulation of the Actin cytoskeleton. The WAVE proteins are related to the WASP family proteins and are likewise involved in mediating Actin reorganization downstream of the Rho family of small GTPases. The protein homologs WAVE1 and WAVE2 regulate membrane ruffling by inducing the formation of Actin filament clusters in response to GTP binding and by activating Rac. They mediate Actin polymerization by cooperating with the Arp2/3 complex, thereby promoting the formation of Actin filaments. WAVE1, which is also designated SCAR (suppressor of cAR), is expressed primarily in the brain, while WAVE2 is widely expressed, with the expression highest in peripheral blood leukocytes. WAVE3 forms a multiprotein complex that links receptor kinases with Actin and plays a role in the transduction of signals involving changes in cell shape, function or motility.

Product:

Rabbit IgG, 1mg/ml in PBS with 0.02% sodium azide, 50% glycerol, pH7.2

Molecular Weight:

54 kDa

Swiss-Prot:

Q9Y6W5(Human) Q8BH43(Mouse) EntrezGene:313024(Rat)

Purification&Purity:

ProA affinity purified

Applications:

WB:1:1,000-1:5,000

IHC:1:50-1:200

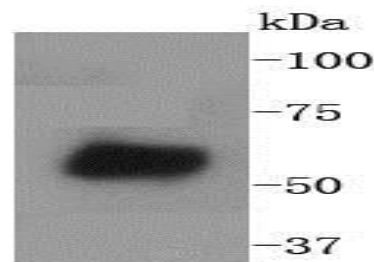
Storage&Stability:

Store at +4 °C after thawing. Aliquot store at -20 °C or -80 °C. Avoid repeated freeze / thaw cycles.

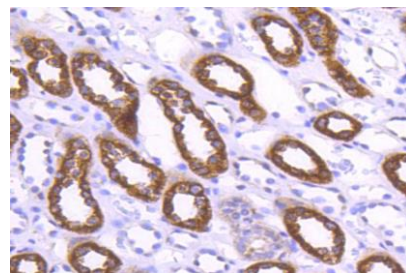
Specificity:

WASF2 polyclonal antibody detects endogenous levels of WASF2 protein.

DATA:



Western blot analysis of WASF2 on human placenta lysates using anti-WASF2 antibody at 1/1,000 dilution.



Immunohistochemical analysis of paraffin-embedded human kidney tissue using anti-WASF2 antibody. Counter stained with hematoxylin.

Note:

For research use only, not for use in diagnostic procedure.

Bioworld Technology, Inc.

Add: 1660 South Highway 100, Suite 500 St. Louis Park, MN 55416, USA.

Email: info@bioworld.com

Tel: 6123263284

Fax: 6122933841

Bioworld technology, co. Ltd.

Add: No 9, weidi road Qixia District Nanjing, 210046, P. R. China.

Email: info@biogot.com

Tel: 0086-025-68037686

Fax: 0086-025-68035151