

WASL polyclonal antibody

Catalog: BS91448

Host: Rabbit

Reactivity: Human, Rat

BackGround:

Regulates actin polymerization by stimulating the actin-nucleating activity of the Arp2/3 complex. Involved in mitosis and cytokinesis, via its role in the regulation of actin polymerization. Binds to HSF1/HSTF1 and forms a complex on heat shock promoter elements (HSE) that negatively regulates HSP90 expression. Plays a role in dendrite spine morphogenesis.

Product:

Rabbit IgG, 1mg/ml in PBS with 0.02% sodium azide, 50% glycerol, pH7.2

Molecular Weight:

55 kDa (Predicted band size)

Swiss-Prot:

O00401(Human) O08816(Rat)

Purification&Purity:

Protein affinity purified.

Applications:

WB:1:500-1:2,000

ICC:1:50-1:200

IHC:1:50

FC:1:50-1:100

Storage&Stability:

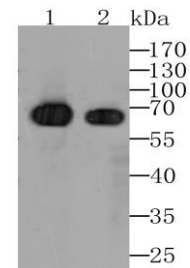
Store at +4 °C after thawing. Aliquot store at -20 °C. Avoid repeated freeze / thaw cycles.

Specificity:

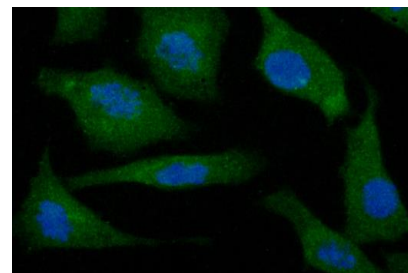
WASL polyclonal antibody detects endogenous levels of

WASL protein.

DATA:



Western blot analysis of WASL on SK-BR-3 and SH-SY-5Y cell lysate using anti- WASL antibody at 1/500 dilution.



ICC staining WASL in SH-SY-5Y cells (green). The nuclear counter stain is DAPI (blue). Cells were fixed in paraformaldehyde, permeabilised with 0.25% Triton X100/PBS.

Note:

For research use only, not for use in diagnostic procedure.

Bioworld Technology, Inc.

Add: 1660 South Highway 100, Suite 500 St. Louis Park, MN 55416, USA.

Email: info@bioworld.com

Tel: 6123263284

Fax: 6122933841

Bioworld technology, co. Ltd.

Add: No 9, weidi road Qixia District Nanjing, 210046, P. R. China.

Email: info@biogot.com

Tel: 0086-025-68037686

Fax: 0086-025-68035151