

WNT2 polyclonal antibody

Catalog: BS91452

Host: Rabbit

Reactivity: Human, Mouse

BackGround:

Belongs to the Wnt family. Ligand for members of the frizzled family of seven transmembrane receptors. Probable developmental protein. May be a signaling molecule which affects the development of discrete regions of tissues. Is likely to signal over only few cell diameters.

Product:

Rabbit IgG, 1mg/ml in PBS with 0.02% sodium azide, 50% glycerol, pH7.2

Molecular Weight:

37 kDa

Swiss-Prot:

P09544(Human)

Purification&Purity:

Peptide affinity purified

Applications:

WB:1:1,000-1:2,000

FC:1:100-1:200

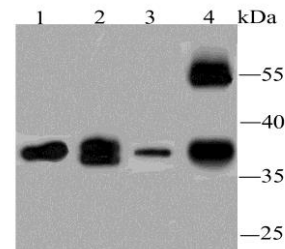
Storage&Stability:

Store at +4 °C after thawing. Aliquot store at -20 °C or -80 °C. Avoid repeated freeze / thaw cycles.

Specificity:

WNT2 polyclonal antibody detects endogenous levels of WNT2 protein.

DATA:



Western blot analysis of WNT2 on different lysates using anti-WNT2 antibody at 1/1,000 dilution.

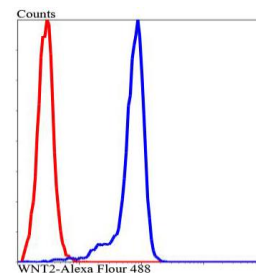
Positive control:

Lane 1: PC-3M

Lane 2: Mouse brain tissue

Lane 3: Jurkat

Lane 4: Human lung tissue



Flow cytometric analysis of Jurkat cells with WNT2 antibody at 1/100 dilution (blue) compared with an unlabelled control (cells without incubation with primary antibody; red). Alexa Fluor 488-conjugated Goat anti rabbit IgG was used as the secondary antibody.

Note:

For research use only, not for use in diagnostic procedure.

Bioworld Technology, Inc.

Add: 1660 South Highway 100, Suite 500 St. Louis Park, MN 55416, USA.

Email: info@bioworld.com

Tel: 6123263284

Fax: 6122933841

Bioworld technology, co. Ltd.

Add: No 9, weidi road Qixia District Nanjing, 210046, P. R. China.

Email: info@biogot.com

Tel: 0086-025-68037686

Fax: 0086-025-68035151