

## Zic1 polyclonal antibody

Catalog: BS91464

Host: Rabbit

Reactivity: Human, Mouse, Rat

### BackGround:

Zic1 (zinc finger protein of the cerebellum 1) is a C2H2 zinc finger transcription factor that controls the expansion of neuronal precursors by inhibiting the progression of neuronal differentiation. Zic1 determines the cerebellar folial pattern by influencing proliferation in the external germinal layer (EGL). Zic1 can bind and transactivate the apolipoprotein E gene. This gene is closely linked to the gene encoding zinc finger protein of the cerebellum 4, a related family member on chromosome 3.

### Product:

Rabbit IgG, 1mg/ml in PBS with 0.02% sodium azide, 50% glycerol, pH7.2

### Molecular Weight:

48 kDa

### Swiss-Prot:

Q15915(Human) P46684(Mouse)

### Purification&Purity:

ProA affinity purified

### Applications:

WB:1:500-1:1,000

IHC:1:50-1:200

FC:1:50-1:100

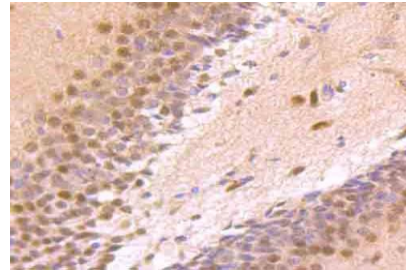
### Storage&Stability:

Store at +4 °C after thawing. Aliquot store at -20 °C or -80 °C. Avoid repeated freeze / thaw cycles.

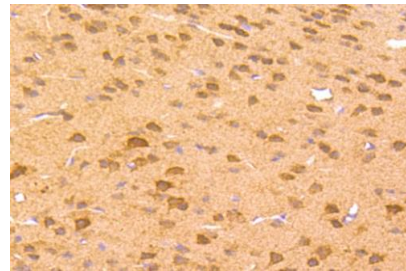
### Specificity:

Zic1 polyclonal antibody detects endogenous levels of Zic1 protein.

### DATA:



Immunohistochemical analysis of paraffin-embedded rat brain tissue using anti-Zic1 antibody. Counter stained with hematoxylin.



Immunohistochemical analysis of paraffin-embedded mouse brain tissue using anti-Zic1 antibody. Counter stained with hematoxylin.

### Note:

For research use only, not for use in diagnostic procedure.

### Bioworld Technology, Inc.

Add: 1660 South Highway 100, Suite 500 St. Louis Park, MN 55416, USA.

Email: [info@bioworld.com](mailto:info@bioworld.com)

Tel: 6123263284

Fax: 6122933841

### Bioworld technology, co. Ltd.

Add: No 9, weidi road Qixia District Nanjing, 210046, P. R. China.

Email: [info@biogot.com](mailto:info@biogot.com)

Tel: 0086-025-68037686

Fax: 0086-025-68035151